

Bridgestonemotorcycleparts.com

PARTS LIST

Rockford



MODEL HM/S

Rockford Motors inc.

1911 HARRISON AVENUE • ROCKFORD, ILLINOIS 61101

INSTRUCTION FOR USING THE PARTS CATALOGUE

1. This catalogue covers all the items of genuine parts and tools of MODEL HM/S MOTORCYCLE.
2. Please note the following when placing orders.
 - a. Be sure to state accurately the Part No., and Name of each part.
 - b. All the items recessed (set-back) under individual " assembly items " represent a group of parts comprising the " assembly ".
 - c. The numbers shown in the column " No. Req'd " represent the quantities required for one unit.
 - d. "Old part No." indicates the Part Number which was in force until 1966.
 - e. Symbols CHG, CFG, CHW, CCG, following the Part Number indicate Homer green, Feather gray, Homer white and Charcoal gray finish respectively.
 - f. Dimensions of the parts listed in this catalogue are in millimeters.

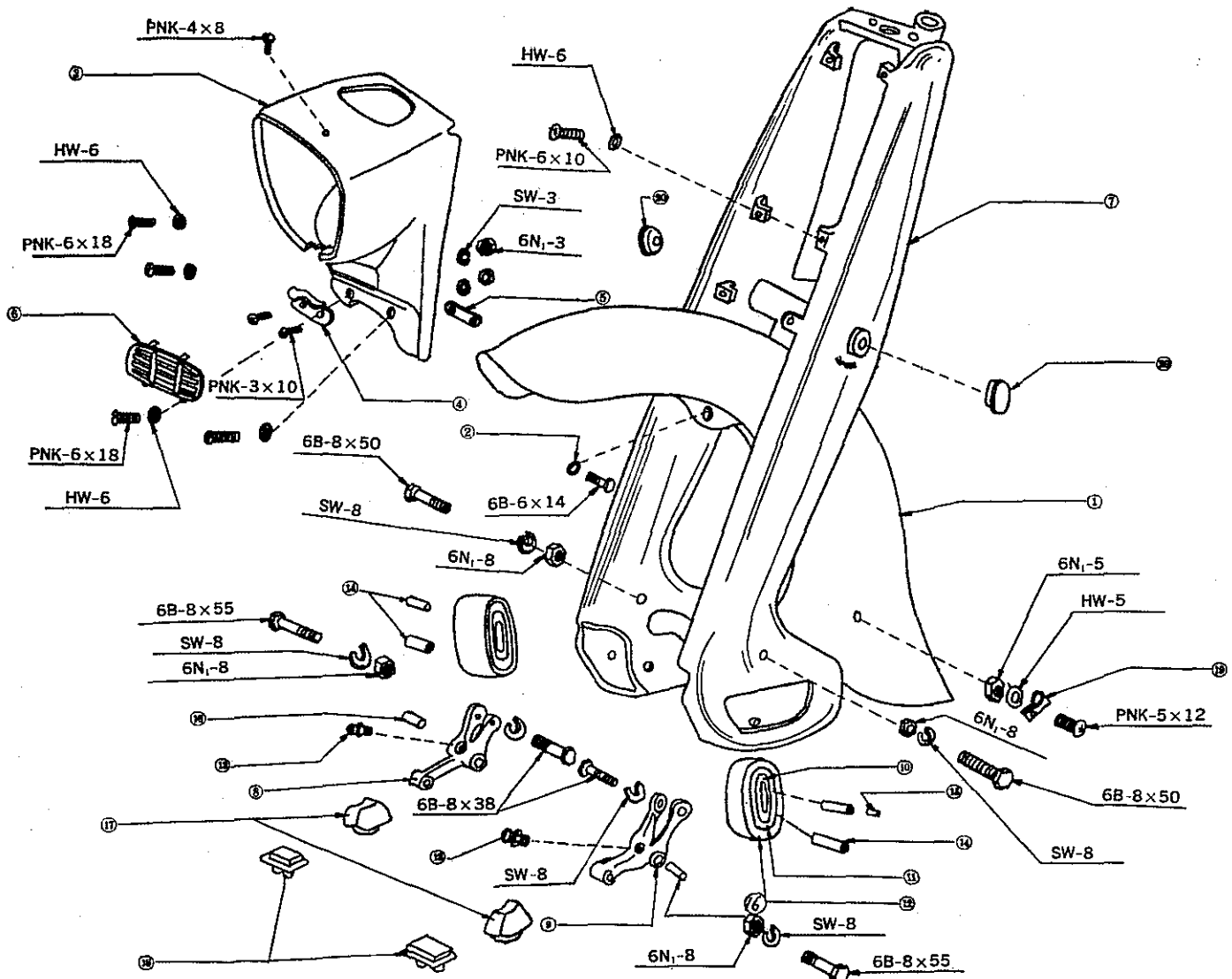
CONTENTS

<u>Index No.</u>	<u>Description</u>	<u>Page</u>
<u>Body Group</u>		
1.	Frame.....	2
2.	Front fender · Front fork · Head lamp body	3
3.	Handle bar · Back mirror assy.....	4
4.	Rear fork · Chain case.....	5
5.	Front wheel.....	6
6.	Rear wheel	7
7.	Seat · Fuel tank · Covers.	8
8.	Left grip assy · Throttle grip assy.....	9
9.	Main switch · Head lamp · Tail lamp · Turn lamp	10
10.	Speedometer · Cables.	11
11.	Brake pedal · Foot rest · Rear Cushion.	12
12.	Air cleaner · Exhaust pipe · Muffler.	13
13.	Legshield · Engine covers	14
14.	Battery · Tool · Special tool	15
<u>Engine Group</u>		
15.	Cylinder head · Cylinder.....	16
16.	Piston · Crankshaft	17
17.	Carburetor	18
18.	Flywheel magneto · Fan.	19
19.	Fan Cover · Cylinder cover · Crank case cover.....	20
20.	Left crank case.....	21
21.	Right crank case	22
22.	Crank case cover.....	23
23.	Clutch	24
24.	Transmission gears.	25
25.	Gear shifting parts	26
26.	Kick starter parts.....	27
27.	Exclusive parts for U.S.A (C.H.P).	28

2) FRONT FENDER · FRONT FORK · HEAD LAMP BODY

Bridgestonemotorcycleparts.com

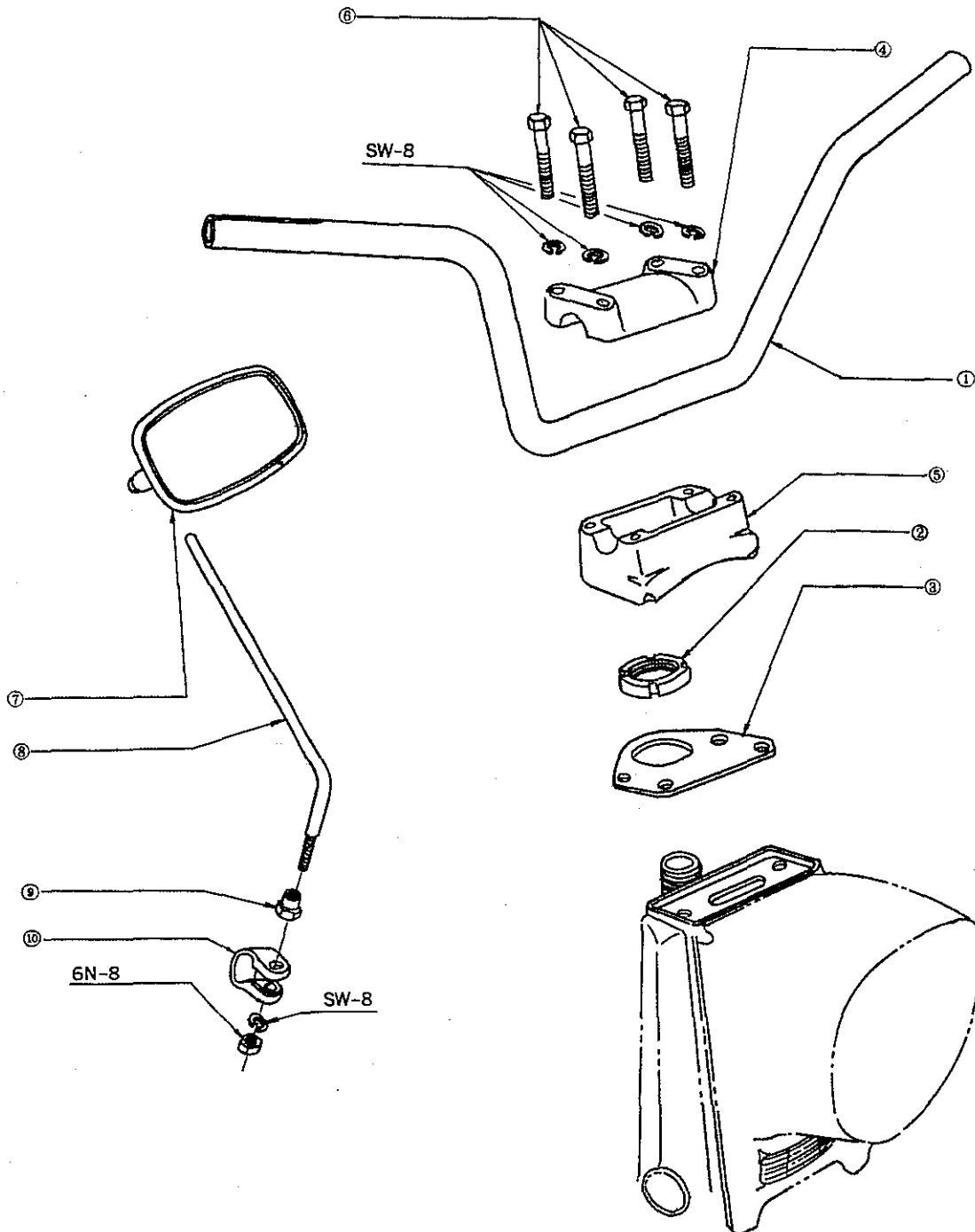
Index No.	Part No.	Part Name	Index No.	Part No.	Part Name
2- 1	4411-3100 CHG	Front Fender	2-18	4255-3000	Rebound Stopper A
2- 1	4411-3100 CFG	Front Fender	2-19	4431-3000	Cable Clip
2- 2	4433-3100	Fender Washer A	2-20	4286-3000	Lower Bridge Cap
2- 3	8111-3100 CHG	Head Lamp Body	2-	0122-0855	Hexagon Bolt B
2- 3	8111-3120 CFG	Head Lamp Body	2-	0111-0850	Hexagon Bolt A
2-	4100-3010 CHG	Front Fork Assy	2-	0121-0838	Hexagon Bolt B
2-	4100-3010 CFG	Front Fork Assy	2-	0111-0614	Hexagon Bolt A
2- 7	4210-3010 CHG	Fork Body Comp.	2-	0311-0618	Cross Recd Pan Head Screw
2- 7	4210-3010 CFG	Fork Body Comp	2-	0311-0610	Cross Recd Pan Head Screw
2- 8	4230-3001	Right Front Arm Comp	2-	0311-0512	Cross Recd Pan Head Screw
2- 9	4220-3001	Left Front Arm Comp	2-	0311-0408	Cross Recd Pan Head Screw
2-10	4241-3001	Rubber Cushion Ring A	2-	0311-0310	Cross Recd Pan Head Screw
2-11	4242-3001	Rubber Cushion Ring B	2-	0211-0800	Hexagon Nut A
2-12	4243-3001	Rubber Cushion Ring C	2-	0211-0500	Hexagon Nut A
2-13	7134-3002	Grease Nipple	2-	0211-0300	Hexagon Nut A
2-14	4251-3000	Rubber Bush	2-	0411-0613	Plane Washer A
2-15	4253-3000	Arm Collar B	2-	0411-0512	Plane Washer A
2-16	4252-3000	Arm Collar A	2-	0431-0820	Spring Washer
2-17	4254-3003	Front Cushion Stopper	2-	0431-0307	Spring Washer



3) HANDLE BAR · BACK MIRROR ASSY

Bridgestonemotorcycleparts.com

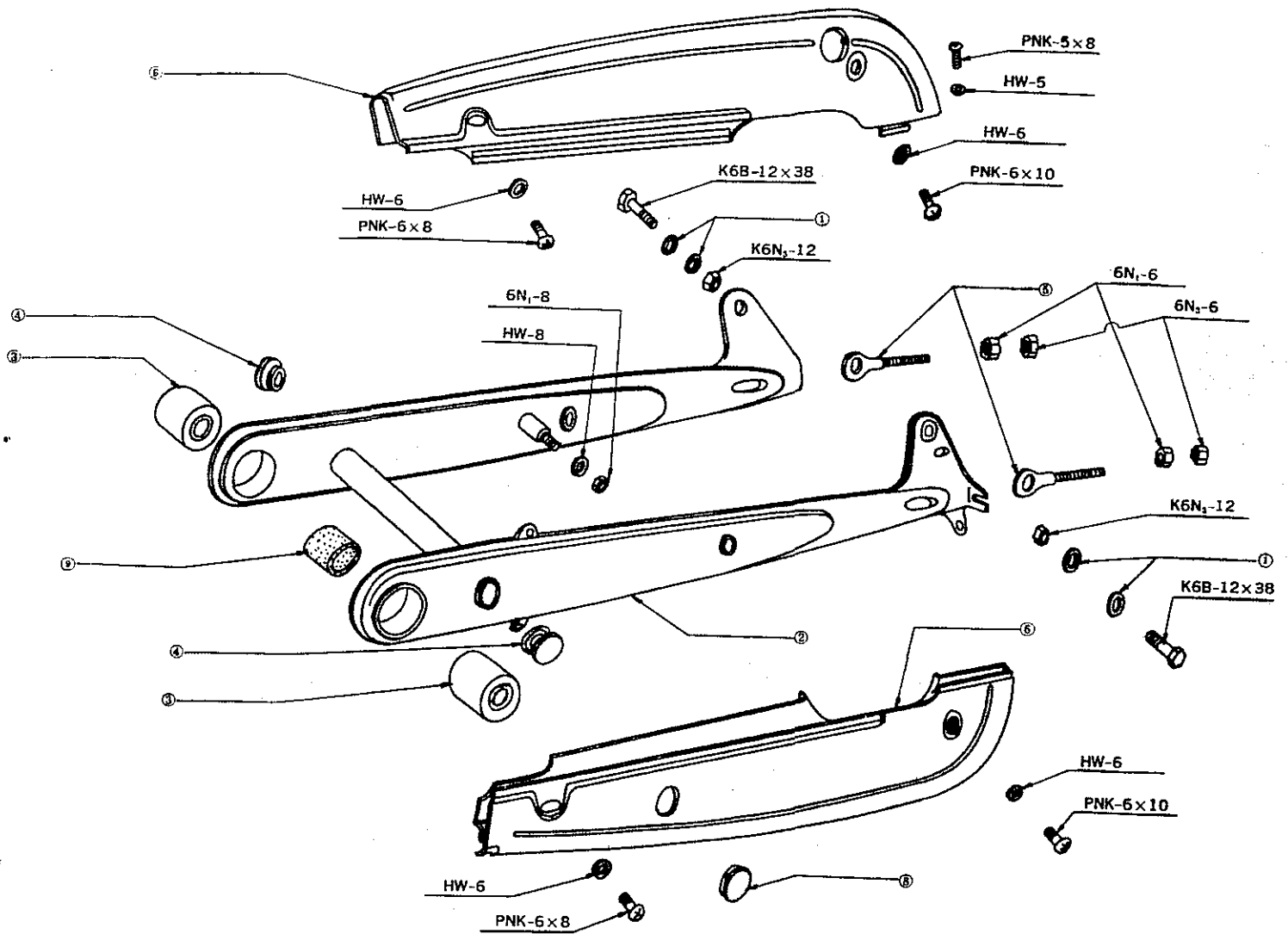
Index No.	Part No.	Part Name	Index No.	Part No.	Part Name
3- 1	4511-3101	Steering Handle Bar	3- 4	4283-3012	Handle Holder
3- 2	3323-3000	Head Lock Nut	3- 5	4282-3012	Holder Base
3- 3	4281-3010	Handle Bracket	3- 6	09511-106	8×62 Hexagon Bolt
3- 7	4610-3100	Back Mirror Comp	3- 10	4622-3102	Back Mirror Clamp
3- 8	4621-3101	Back Mirror Stay	3- 1	4511-3101	Steering Handle Bar
3- 9	0211-0800	Hexagon Nut A	3- 2	3323-3000	Head Lock Nut
3- 10	0431-0820	Spring Washer	3- 3	4281-3010	Handle Bracket



4) REAR FORK · CHAIN CASE

Bridgestonemotorcycleparts.com

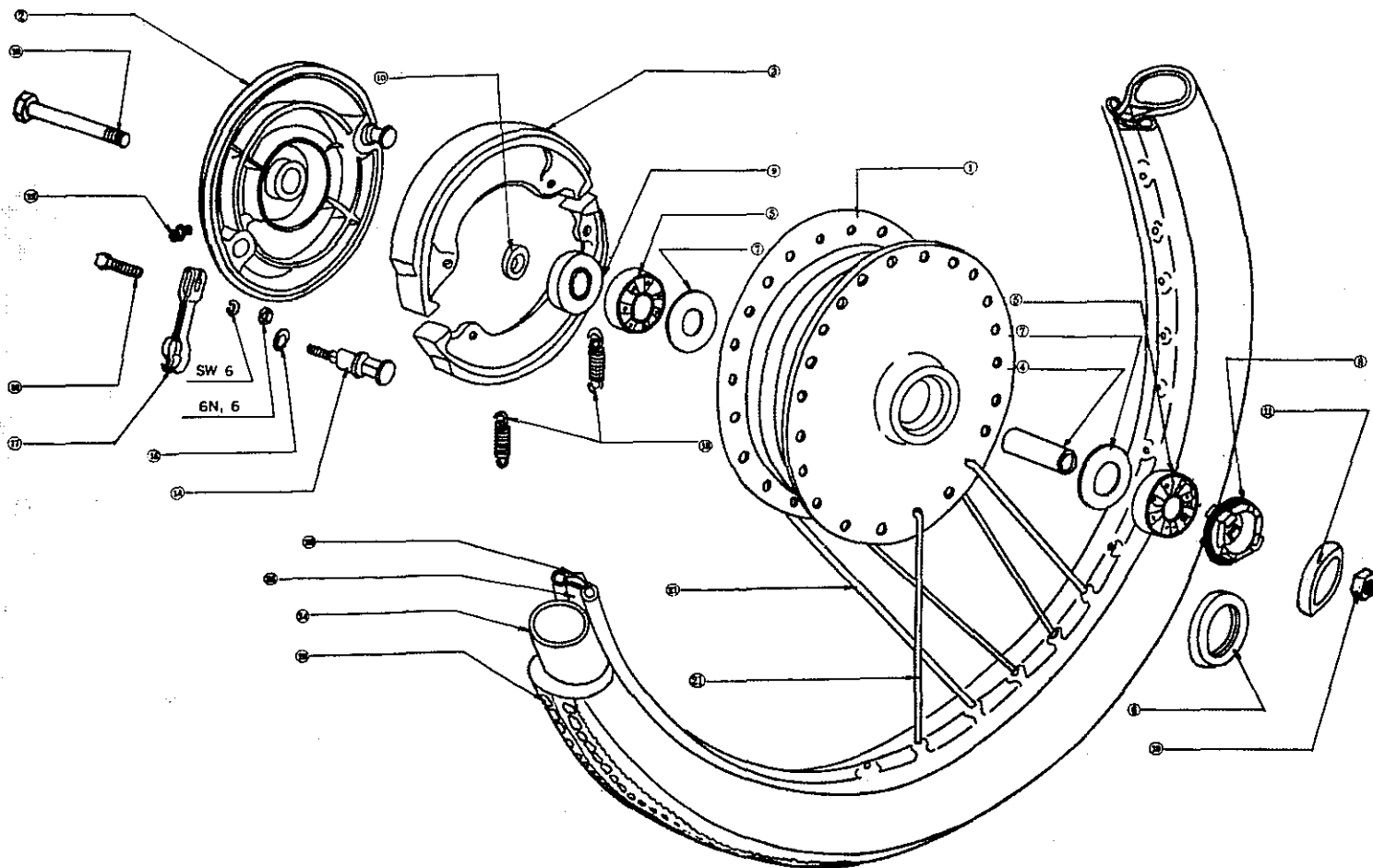
Index No.	Part No.	Part Name	Index No.	Part No.	Part Name
4- 1	09541-101	12 Plane Washer	4-	09511-104	12×38 Hexagon Bolt
4- 2	4810-3003 CHG	Rear Fork Comp	4-	0111-0610	Hexagon Bolt A
4- 2	4810-3003 CFG	Rear Fork Comp	4-	0111-0608	Hexagon Bolt A
4- 3	4851-3002	Rear Fork Bush	4-	09511-126	5×8 Hexagon Bolt
4- 4	4852-3001	Rear Fork Cap	4-	09521-103	12 Hexagon Nut
4- 5	4861-3002	Chain Adjuster	4-	0211-0800	Hexagon Nut A
4- 6	4701-3100 CHG	Chain Case Assy	4-	0211-0600	Hexagon Nut A
4- 6	4701-3100 CFG	Chain Case Assy	4-	0231-0600	Hexagon Nut C
4- 8	4731-3000	Chain Inspection Cap	4-	0411-0818	Plane Washer A
4- 9	4853-3011	Chain protector	4-	0411-0613	Plane Washer A
			4-	0411-0512	Plane Washer A



5) FRONT WHEEL

Bridgestonemotorcycleparts.com

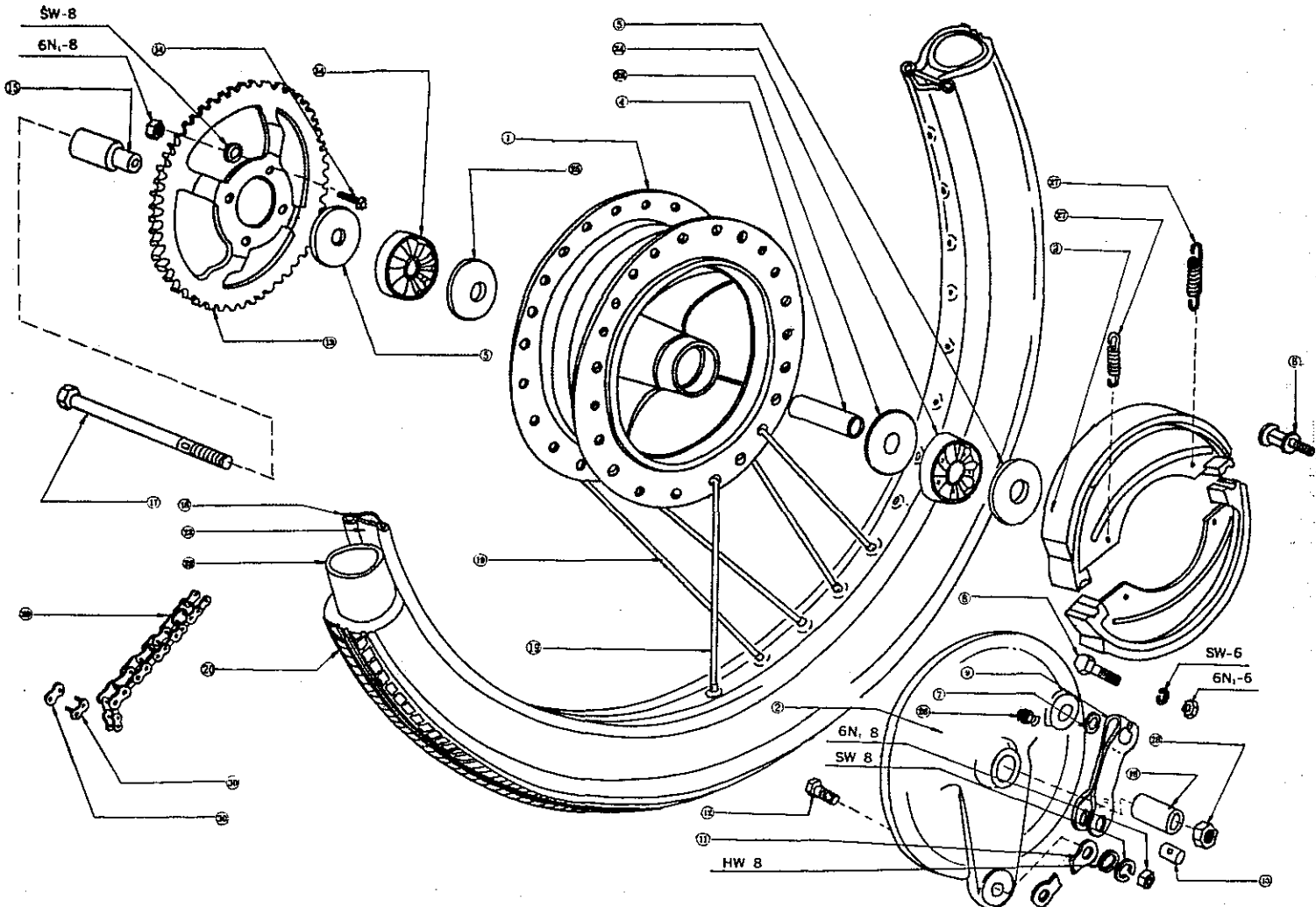
Index No.	Part No.	Part Name	Index No.	Part No.	Part Name
5- 1	7111-3004	Front Brake Drum	5-14	7151-3001	Front Brake Cam
5- 1	7111-3003	Front Brake Drum	5-15	7152-3001	Cam Dust Seal
5- 2	7131-3005	Front Brake Panel	5-16	0121-0628	Hexagon Bolt C
5- 2	7131-3004	Front Brake Panel	5-17	7153-3004	Brake Arm A
5- 3	7105-3003	Brake Shoe Assy	5-18	7221-3002	Front Wheel Axle
5- 4	7114-3002	Front Drum Collar	5-19	0252-1200	Hexagon Nut E
5- 5	07-6201-03	Ball Bearing	5-20	7241-3000	Front Wheel Rim
5- 6	09590-101	32 Oil Seal	5-21	7108-3000	Front Spoke Assy
5- 7	7115-3000	Collar Supporter	5-23	7251-3000	Front Wheel Tire
5- 8	7116-3000	Speedometer Drive Gear	5-24	7252-3000	Wheel Tube
5- 9	09590-102	20 Oil Seal	5-25	7253-3000	Tire Flap
5-10	7118-3000	Oil Seal Collar	5-	0211-0600	Hexagon Nut A
5-11	7121-3000	Dust Seal A	5-	0431-0615	Spring Washer
5-12	7134-3002	Grease Nipple	5-	09524-101	12 Pal Nut
5-13	7145-3001	Brake Shoe Spring	5-	0232-1200	Hexagon Nut C
5-14	7151-3003	Front Brake Cam			



6) REAR WHEEL

Bridgestonemotorcycleparts.com

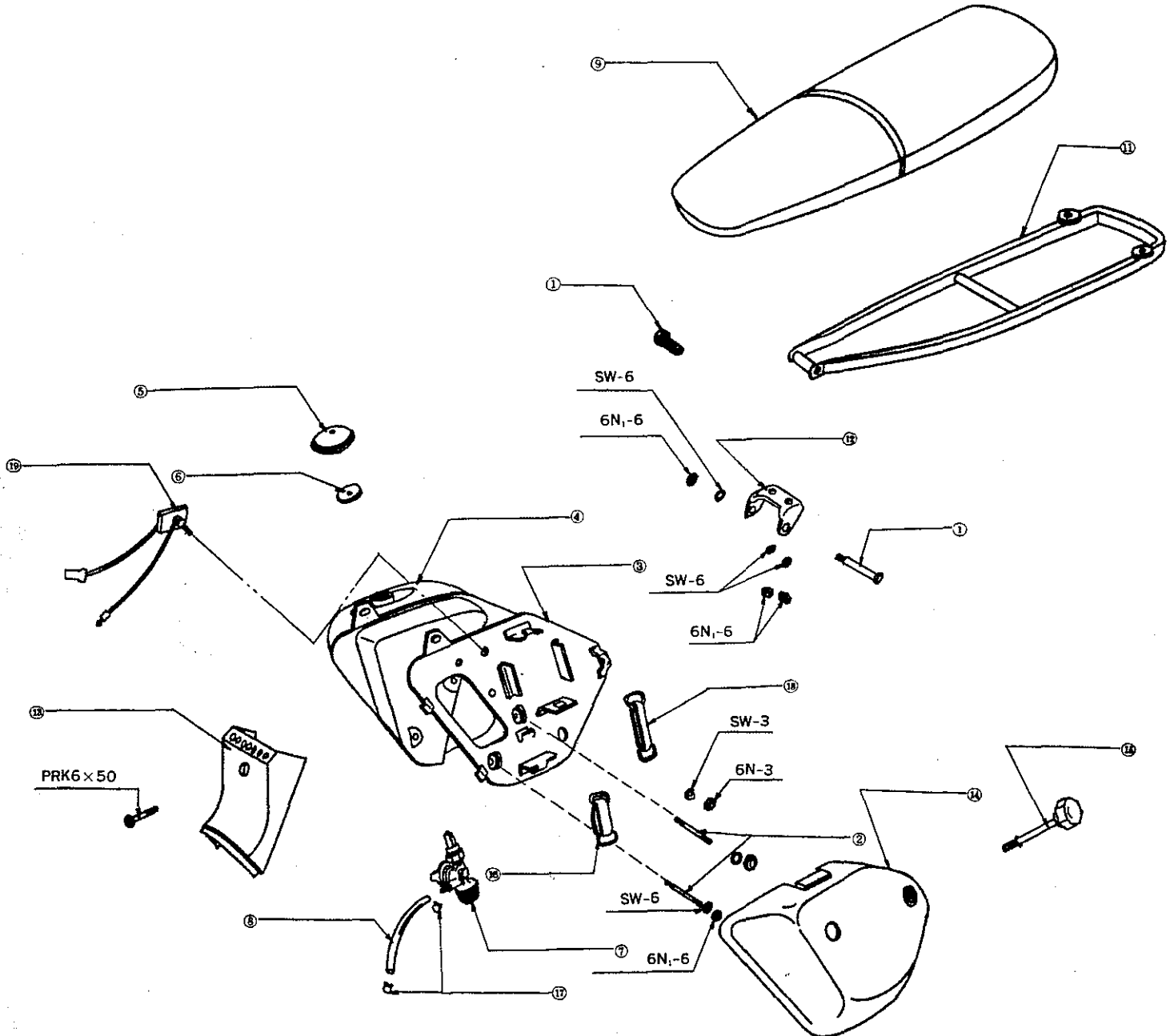
Index No.	Part No.	Part Name	Index No.	Part No.	Part Name
6- 1	7311-3002	Rear Brake Drum	6-18	7441-3000	Rear Wheel Rim
6- 2	7331-3002	Rear Brake Panel	6-19	7308-3000	Rear Spoke Assy
6- 3	7105-3003	Brake Shoe Assy	6-20	7451-3000	Rear Wheel Tire
6- 4	7314-3001	Rear Drum Collar	6-22	7252-3000	Tube
6- 5	09590-103	17 Oil Seal	6-23	7253-3000	Rim Band
6- 6	7351-3003	Rear Brake Cam	6-24	07-6201-03	Ball Bearing
6- 7	7152-3001	Cam Dust Seal	6-25	7115-3000	Center Pipe Supporter
6- 8	0121-0628	Hexagon Bolt B	6-26	7134-3002	Grease Nipple
6- 9	7353-3004	Brake Arm C	6-27	7145-3001	Brake Shoe Spring
6-10	7361-3003	Brake Arm Pin	6-28	0252-1200	Hexagon Nut E
6-11	7366-3000	Rear Torque Link	6-29	7501-3000	Chain Assy
6-12	7367-3001	Rear Link Bolt	6-30	7520-3000	Chain Connector No 420
6-13	7381-3000	Final Driven Sprocket	6-	0211-0800	Hexagon Nut A
6-14	09511-105	8x28 Hexagon Bolt	6-	0211-0600	Hexagon Nut A
6-15	7427-3001	Oil Seal Collar	6-	0411-0818	Plane Washer A
6-16	7426-3001	Rear Axle Collar	6-	0431-0820	Spring Washer
6-17	7421-3002	Rear Wheel Axle	6-	0431-0615	Spring Washer



7) SEAT · FUEL TANK · COVERS

Bridgestonemotorcycleparts.com

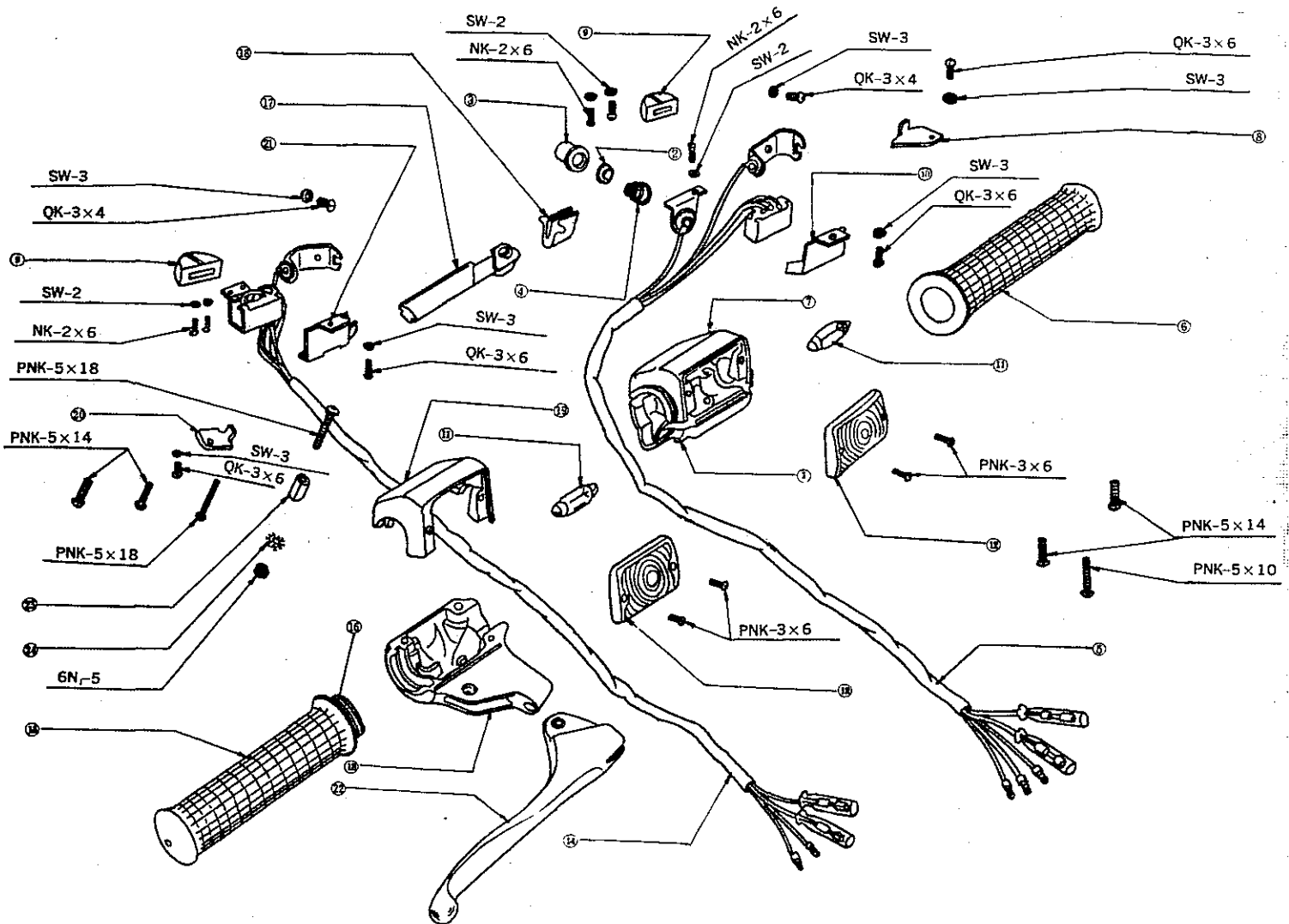
Index No.	Part No.	Part Name	Index No.	Part No.	Part Name
7- 1	3421-3110	Seat Pivot Bolt	7-14	6811-3130 CHG	Left Cover
7- 2	09516-101	6×82 Stud	7-14	6811-3130 CFG	Left Cover
7- 3	3341-3100 CHG	Battery Mounting Plate	7-15	6831-3100	Cover Knob
7- 4	5110-3101 CHG	Fuel Tank Comp	7-16	3354-3001	Tool Band
7- 4	5110-3101 CFG	Fuel Tank Comp	7-17	5187-3004	Fuel Tube Clip
7- 5	5160-3100	Tank Cap Comp	7-18	3353-3011	Battery Band
7- 6	5171-3100	Tank Cap Gasket	7-19	8702-3001	Rectifier Assy
7- 7	5103-5000	Fuel Cock Assy	7-	6815-3120	Cover Ornament
7- 8	5172-3100	Fuel Tube	7-	6823-8000	Eyelet
7- 9	6460-3110	Dual Seat Comp	7-	0342-0625	Cross Rec Oval Head Screw
7-11	6581-3110	Dual Seat Rack	7-	0211-0600	Hexagon Nut A
7-12	6426-3110	Seat Pivot Bracket	7-	0211-0300	Hexagon Nut A
7-13	6751-3101 CHG	Dust Seal Cover	7-	0431-0615	Spring Washer
7-13	6751-3101 CFG	Dust Seal Cover	7-	0431-0307	Spring Washer



8) LEFT GRIP ASSY · THROTTLE GRIP ASSY

Bridgestonemotorcycleparts.com

Index No.	Part No.	Part Name	Index No.	Part No.	Part Name
8-	6102-3100 *	Left Grip Assy	8-16	6154-3100	Throttle Grip Pipe
8- 1	6111-3101	Left Switch Case	8-10	6155-3100	Throttle Sliding Shoe
8- 2	6112-3100	Horn Switch Contact Plate	8-18	6156-3100	Throttle Cable Stopper
8- 3	6113-3100	Horn Switch Button	8-19	6151-3101 *	Right Switch Case Cover
8- 4	6114-3100	Horn Switch Spring	8-20	6146-3100	Right Wire Clamp
8- 5	6115-3100 *	Left Handle Wire	8-21	6147-3100	Turn Signal Switch Clamp
8- 6	6123-3100	Left Handle Grip	8-22	6152-3100	Front Brake Lever
8- 7	6121-3101	Left Switch Case Cover	8-23	6124-3100	Lever Pivot Collar
8- 8	6116-3100	Left Wire Clamp	8-24	0451-0510	External Toothed Washer
8- 9	6119-3100	Handle Switch Knob	8-	0311-0518	Cross Recd Pan Head Screw
8-10	6117-3100	Dimmer switch Clamp	8-	0311-0514	Cross Recd Pan Head Screw
8-11	8332-3100	Turn Signal Bulb	8-	0311-0512	Cross Recd Pan Head Screw
8-12	8331-3101	Front Turn Signal Lens	8-	0311-0310	Cross Recd Pan Head Screw
8-	6104-3100 *	Throttle Grip Assy	8-	0311-0306	Cross Recd Pan Head Screw
8-13	6141-3101	Right Switch Case	8-	0311-0304	Cross Recd Pan Head Screw
8-14	6145-3100	Right Handle Wire	8-	0431-0307	Spring Washer
8-15	6153-3100	Right Handle Grip	8-	0431-0205	Spring Washer
			8-	0211-0500	Hexagon Nut A

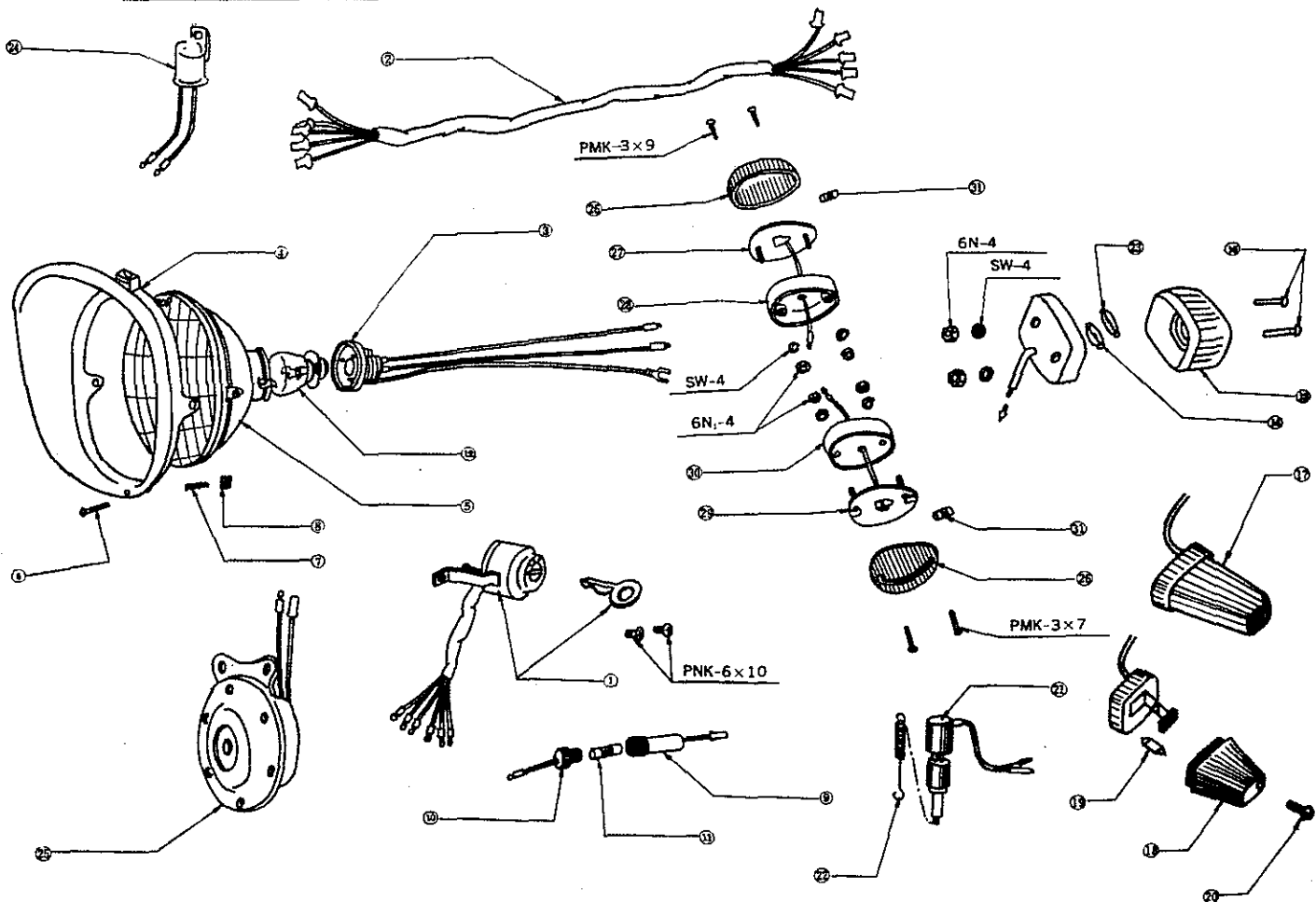


* THIS PART IS OBSOLETE. SEE INDEX NO. 27, PAGE 28, FOR CORRECT ILLUSTRATION AND LISTING.

9) MAIN SWITCH · HEAD LAMP · TAIL LAMP · TURN SIGNAL LAMP

Bridgestonemotorcycleparts.com

Index No.	Part No.	Part Name	Index No.	Part No.	Part Name
9- 1	8601-3100	Main Switch Assy	9-18	8371-3100	Rear Turn Signal Lens
9- 2	8810-3100	Wire Harness Comp	9-19	8332-3100	Turn Signal Bulb
			9-20	0341-0410	Cross Round Oval Head Screw
9-	8102-3012 *	Head Lamp Assy	9-21	8650-3000	Stop Switch Clamp
9- 3	8160-3004 *	Socket Comp	9-22	8661-3001	Stop Switch Spring
9- 4	8141-3002 *	Head Lamp Rim	9-23	8332-3010	Winker Bulb
9- 5	8150-3002	Head Lamp Lens Comp	9-24	8305-3012	Winker Relay
9- 6	8176-3000	Adjusting Screw	9-25	8402-3012	Horn Assy
9- 7	8174-3000	Adjusting Spring			
9- 8	8175-3000	Square Nut	9-26	8371-3011	Winker Lens
			9-27	8362-3031	Rear Winker Base
9-	8802-3030	Fuse Assy	9-28	8361-3011	Rear Winker Body
9-11	8861-3020	Fuse	9-29	8352-3031	Rear Winker Base
			9-30	8351-3011	Rear Winker Body
9-12	8171-3010 *	Head Lamp Bulb	9-31	8332-3020	Winker Bulb
9-	8202-3110 *	Tail Lamp Assy	9-	0311-0610	Cross Recd Pan Head Screw
9-13	8251-3110 *	Tail Lamp Lens	9-	0311-0310	Cross Recd Pan Head Screw
9-15	8252-3020 *	Tail Lamp Bulb	9-	0311-0308	Cross Recd Pan Head Screw
9-16	0342-0436 *	Cross Recd Oval Head Screw	9-	0211-0400	Hexagon Nut A
			9-	0431-0410	Spring Washer
9-17	8304-3101	Right Rear Turn Signal Assy			
9-17	8303-3101	Left Rear Turn Signal Assy			

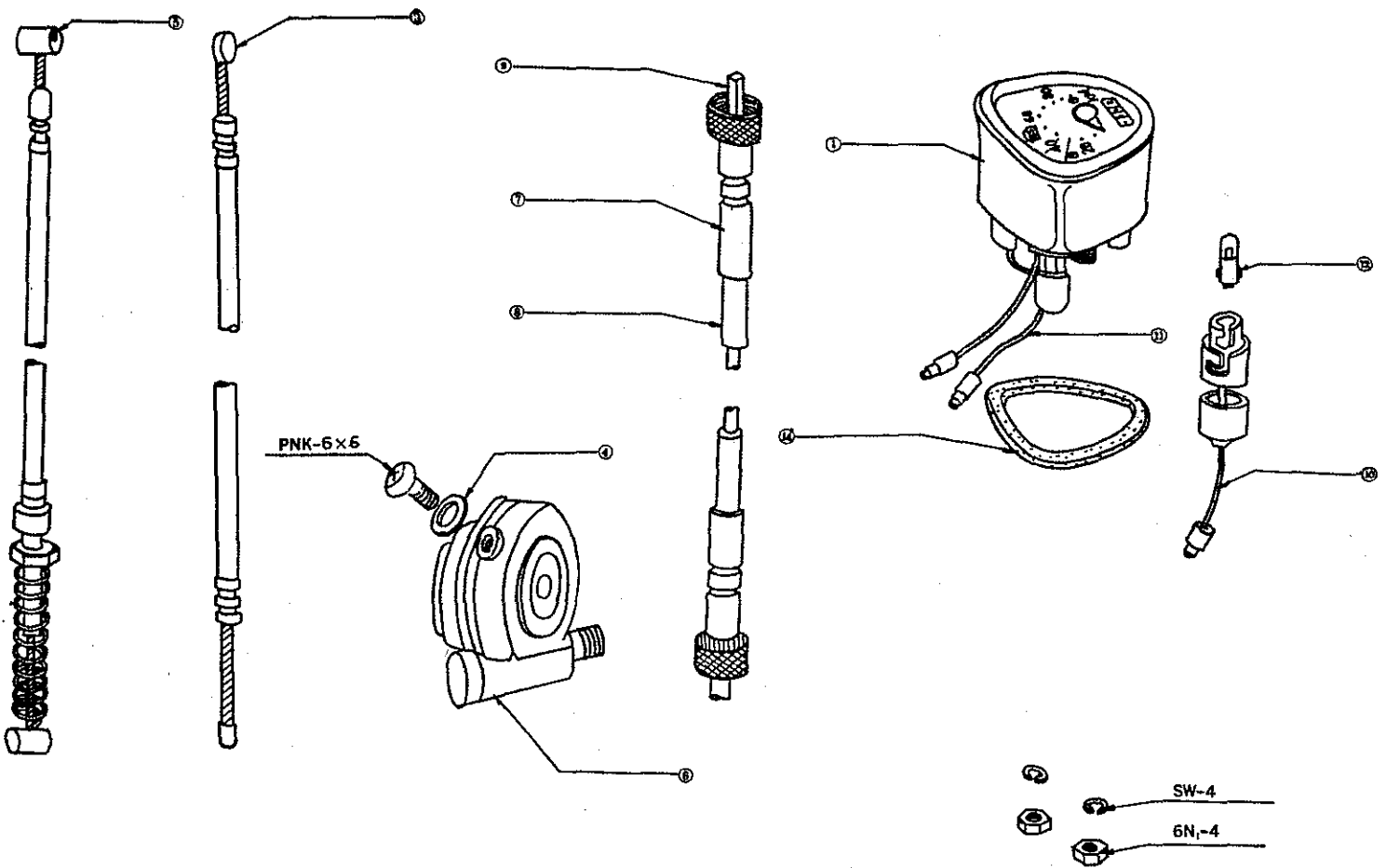


* THIS PART IS OBSOLETE. SEE INDEX NO. 27, PAGE 28, FOR CORRECT ILLUSTRATION AND LISTING.

10) SPEEDOMETER · CABLES

Bridgestonemotorcycleparts.com

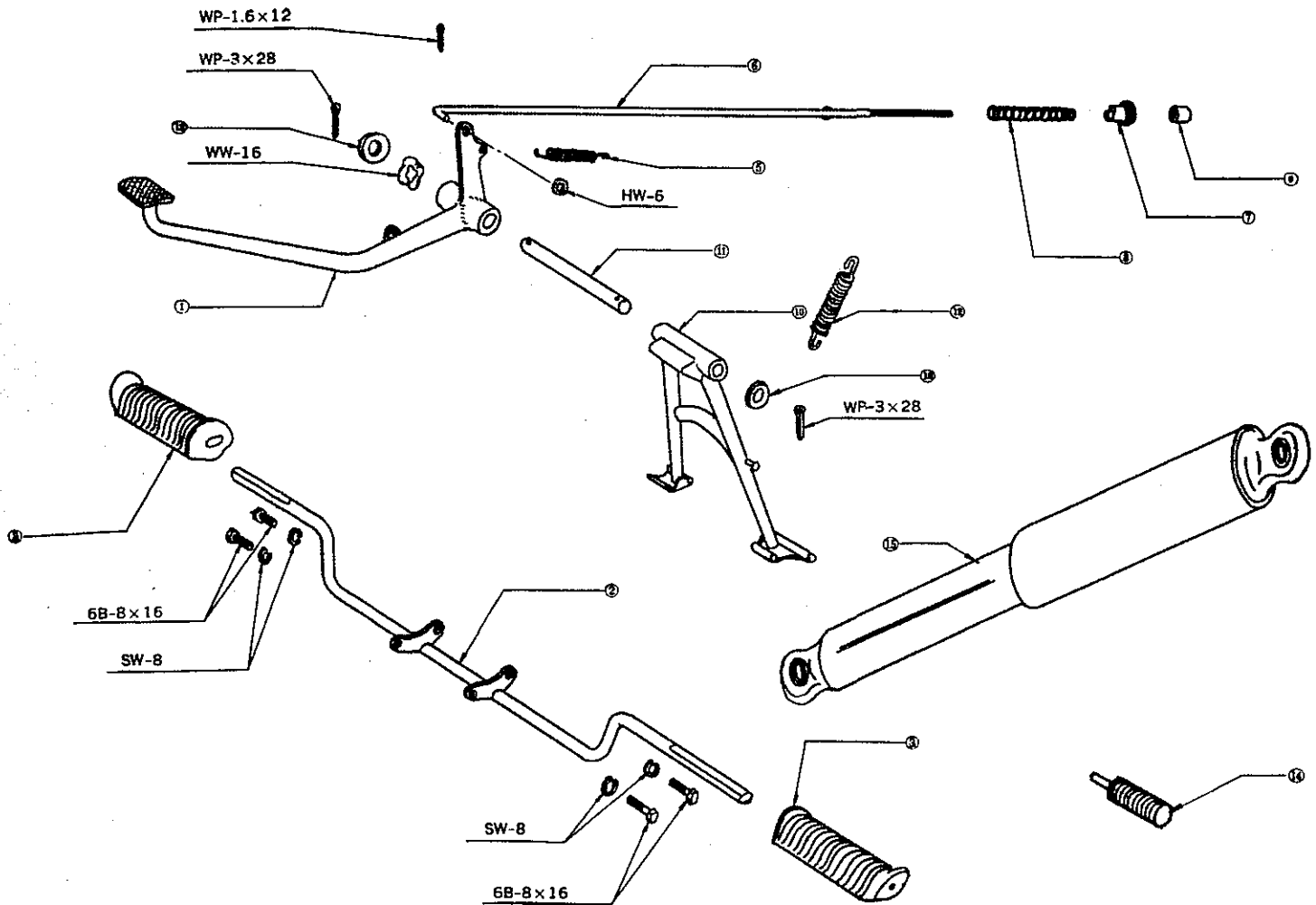
Index No.	Part No.	Part Name	Index No.	Part No.	Part Name
10- 1	8401-3014	Speedometer Assy	10- 9	9411-3000	Speedometer Inner Cable
10- 1	8401-3030	Speedometer Assy	10-10	8421-3002	Speedometer Lamp Socket
10- 3	6176-3100	Throttle Control Wire	10-11	8423-3002	Neutral Lamp Socket
10- 4	09064-102	6 Fiber Gasket	10-12	8424-3010	Speedometer Bulb
10- 5	6181-3000	Front Brake Wire	10-14	8427-3000	Speedometer Gasket
10- 6	7261-3003	Speedometer Gear Assy	10-	0211-0400	Hexagon Nut A
10- 7	6171-3001	Speedometer Drive Cable	10-	0431-0410	Spring Washer
10- 8	9412-3000	Speedometer Cable Tube	10-	09531-102	Cross Recd Pan Head Screw



11) BRAKE PEDAL · FOOT REST · REAR CUSHION

Bridgestonemotorcycleparts.com

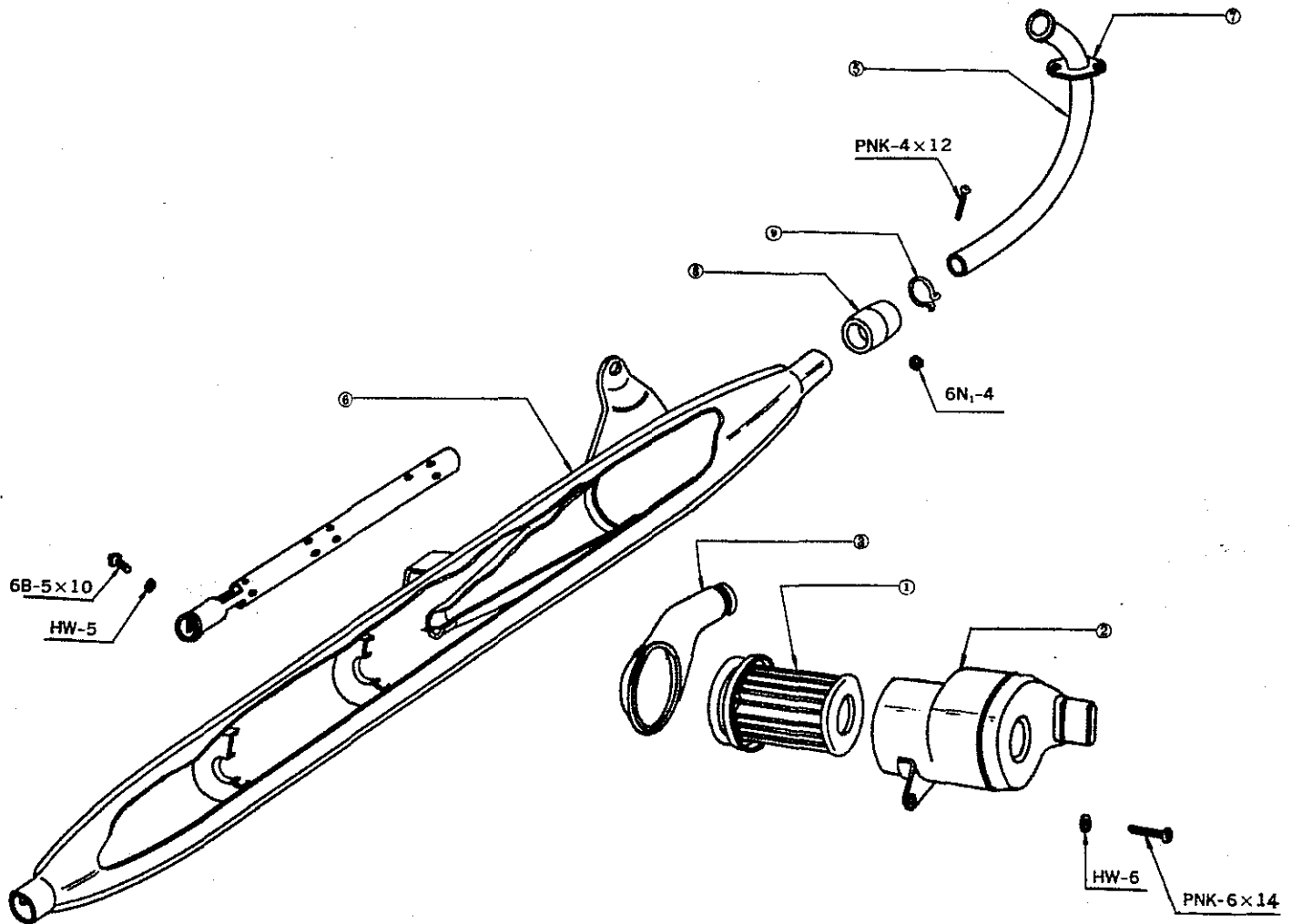
Index No.	Part No.	Part Name	Index No.	Part No.	Part Name
11- 1	3810-3100	Brake Pedke Pedal Comp	11-12	3624-3000	Main Stand Spring
11- 2	3710-3100 CHG	Footrest Bar Comp	11-13	09541-103	15 Plane Washer
11- 2	3710-3100 CFG	Footrest Bar Comp	11-14	3702-3020	Rear Footrest Assy
11- 3	3821-3002	Footrest Rubber	11-15	4901-3005 CHG	Rear Cushion Assy
11- 5	3821-3001	Brake Pedal Spring	11-15	4901-3005 CFG	Rear Cushion Assy
11- 6	3831-3001	Rear Brake Rod	11-	0111-0816	Hexagon Bolt A
11- 7	3832-3000	Brake Rod Adjuster	11-	0411-0613	Plane Washer A
11- 8	3833-3000	Brake Rod Sprjng	11-	0431-0820	Spring Washer
11-10	3610-3100 CHG	Main Stand Comp	11-	09546-101	16 Wave Washer
11-10	3610-3100 CFG	Main Stand Comp	11-	0551-3028	Split Pin
11-11	3621-3002	Main Stand Shaft	11-	0551-1612	Split Pin



12) AIR CLEANER · EXHAUST PIPE · MUFFLER

Bridgestonemotorcycleparts.com

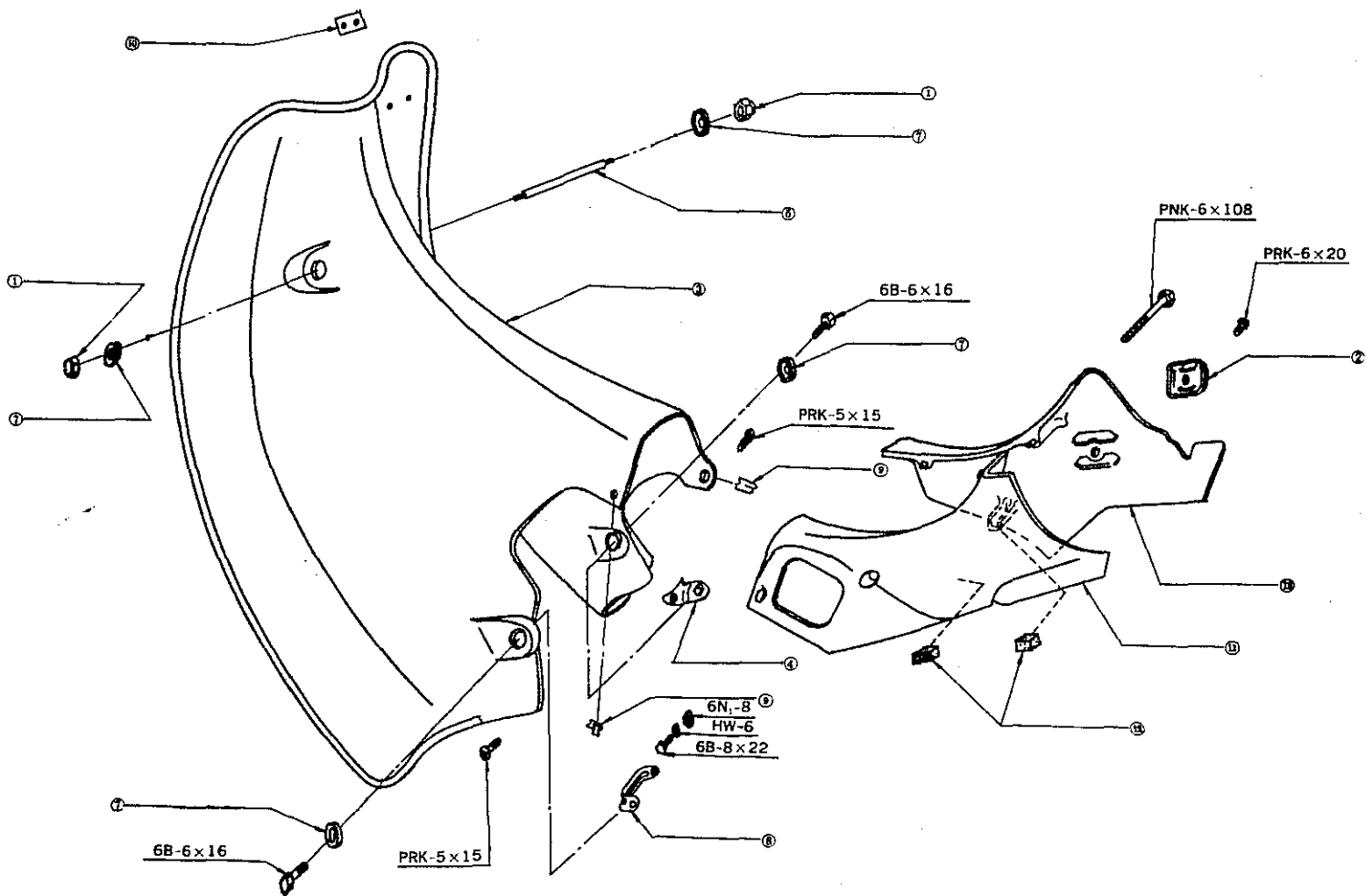
Index No.	Part No.	Part Name	Index No.	Part No.	Part Name
12-	6201-3100	Air Clenaer Assy	12- 9	6363-3001	Muffler Joint Stopper
12- 1	6211-3100	Air Cleaner Element	12-	6364-3000	Muffler Joint Ring
12- 2	6222-3100	Air Cleaner Cover	12-	0121-0510	Hexagon Bolt B
12- 3	6241-3100	Air Pipe	12-	0311-0614	Cross Recd Pan Head Screw
12- 5	6351-3101	Exhaust Pipe	12-	0311-0412	Cross Recd Pan Head Screw
12- 6	6301-3100	Muffler Assy	12-	0211-0400	Hexagon Nut A
12- 7	6361-3000	Exhaust Pipe Clamp	12-	0411-0613	Plane Washer A
12- 8	6362-3002	Muffler Joint Rubber	12-	0411-0512	Plane Washer A



13) LEGSHIELD · ENGINE COVERS

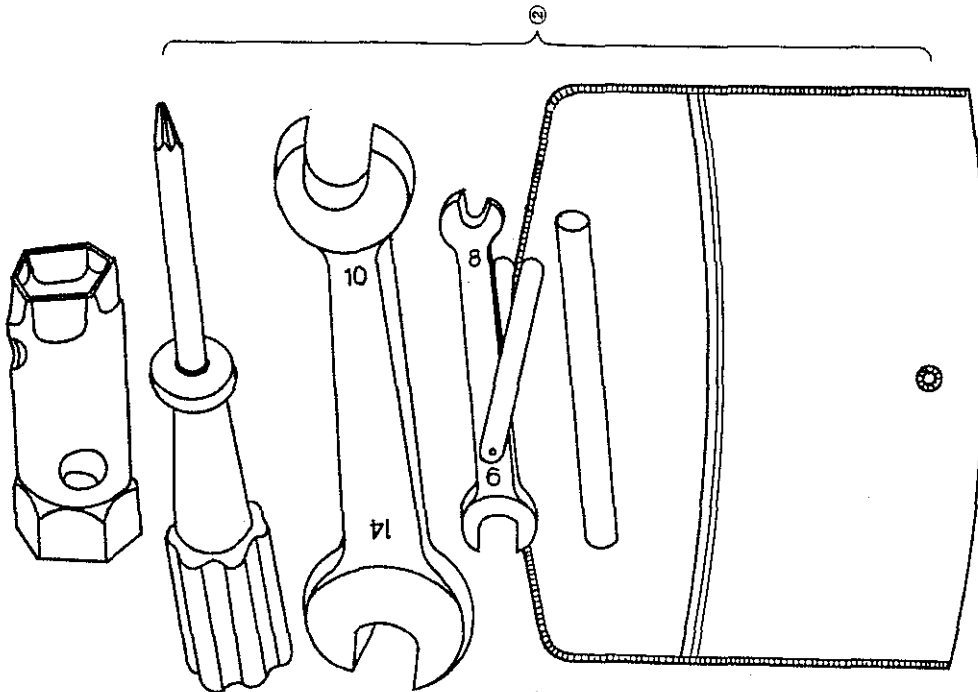
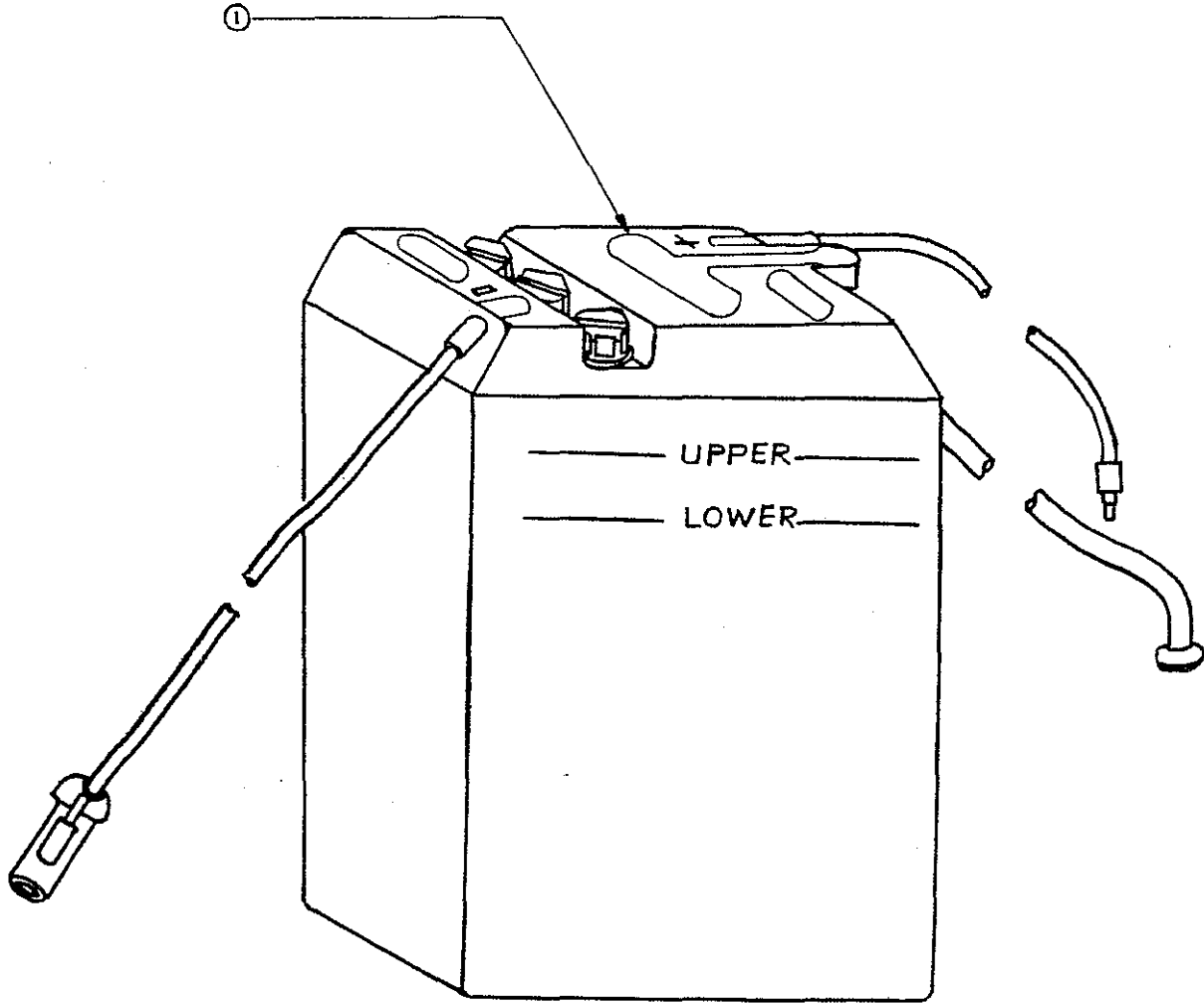
Bridgestonemotorcycleparts.com

Index No.	Part No.	Part Name	Index No.	Part No.	Part Name
13- 1	09525-104	6 Cap Nut	13-10	6615-3120	Emblem B
13- 2	6235-4100CHW	Air Intake Cap	13-11	6711-3100	Left Engine Cover
13- 3	6610-3120CHW	Legshield Comp	13-12	6731-3100	Engine Cover Stopper
13- 3	6610-3120 CCG	Legshield Comp	13-13	6721-3100	Right Engine Cover
13- 4	6622-3100	Right Legshield Stay	13-	6732-3100	Engine Cover Spacer
13- 5	6623-3100	Legshield Mounting Bolt	13-	6733-3100	Engine Cover Grommet
13- 7	09541-105	6 Plane Washer	13-	09534-101	6×108 Oval Head Screw
13- 8	6621-3100	Left Legshield Stay	13-	0311-0620	Cross Recd Pan Head Screw
13- 9	6624-3100	Legshield Mounting Nut	13-	0111-0616	Hexagon Bolt A
13-10	6615-3110	Emblem A	13-	0342-0515	Cross Recd Oval Head Screw



14) BATTERY · TOOL · SPECIAL TOOL
 Bridgestonemotorcycleparts.com

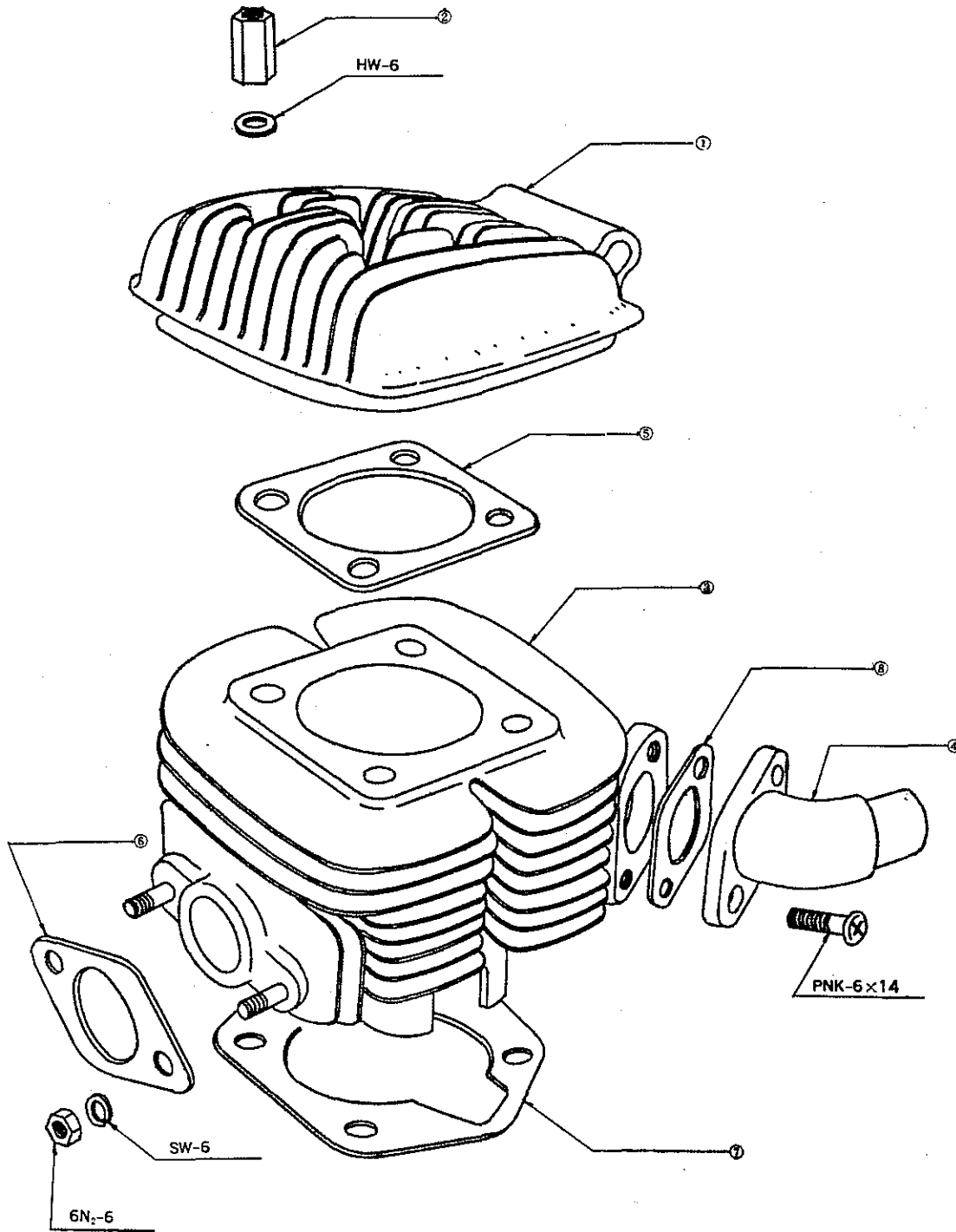
Index No.	Part No.	Part Name	Index No.	Part No.	Part Name
14- 1	8701-3050	Battery	14- 2	9201-3000	Tool Kit
14- 1	9201-3040	Battery	14- 3	9300-3110	Special Tool Set



15) CYLINDER HEAD · CYLINDER

Bridgestonemotorcycleparts.com

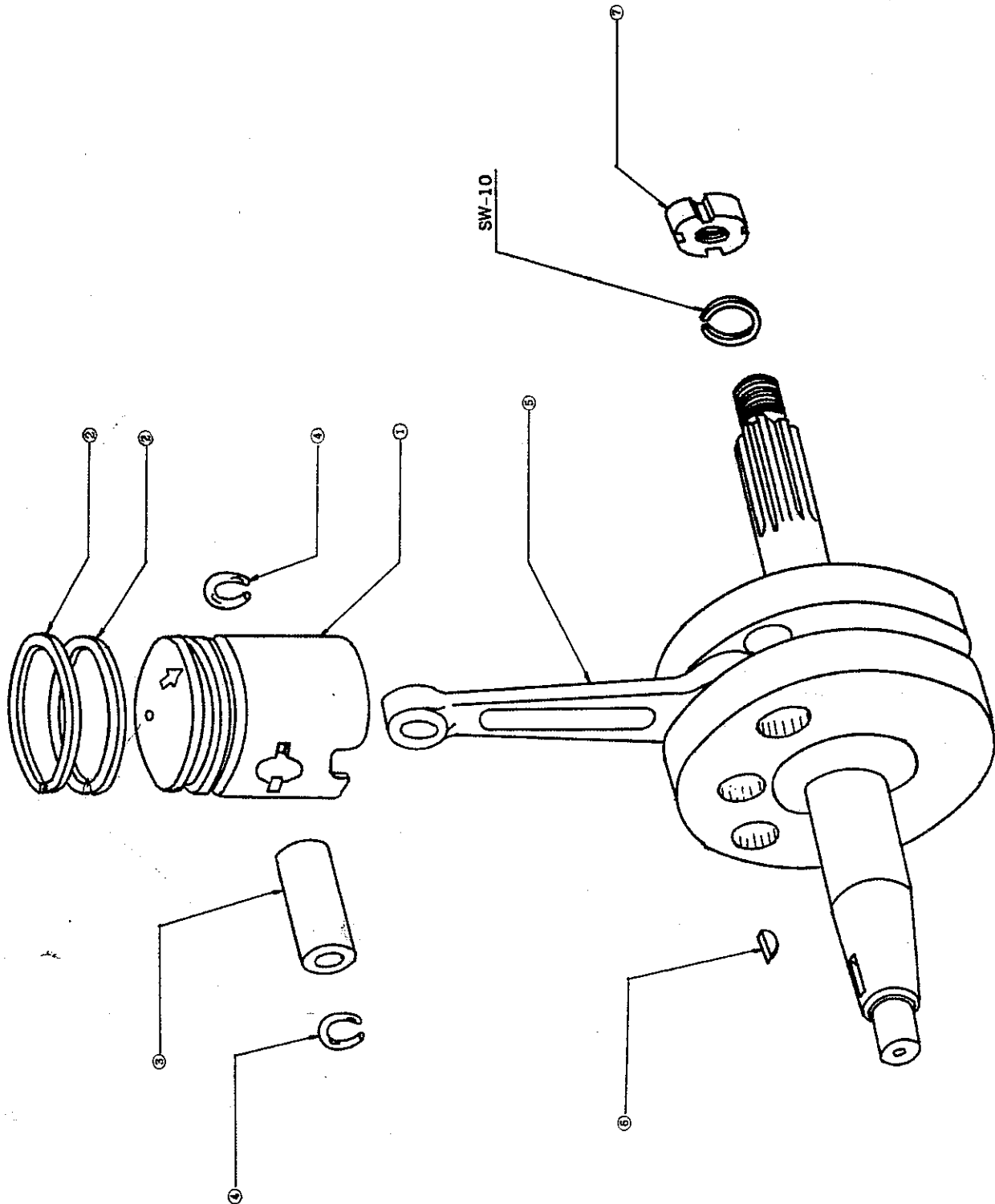
Index No.	Part No.	Part Name	Index No.	Part No.	Part Name
15- 1	1111-3100	Cylinder Head	15- 8	1144-3100	Carburetor Adaptor Gasket
15- 2	1115-3000	Cylinder Head Nut	15-	0411-0613	Plane Washer A
15- 3	1120-3100	Cylinder Comp	15-	0221-0600	Hexagon Nut B
15- 4	1131-3100	Carburetor Adapter	15-	0431-0615	Spring Washer
15- 5	1141-3001	Cylinder Head Gasket	15-	0311-0614	Cross Recd Pan Head Screw
15- 6	1142-3000	Exhaust Pipe Gasket			
15- 7	1143-3100	Cylinder Base Gasket			



16) PISTON · CRANKSHAFT

Bridgestonemotorcycleparts.com

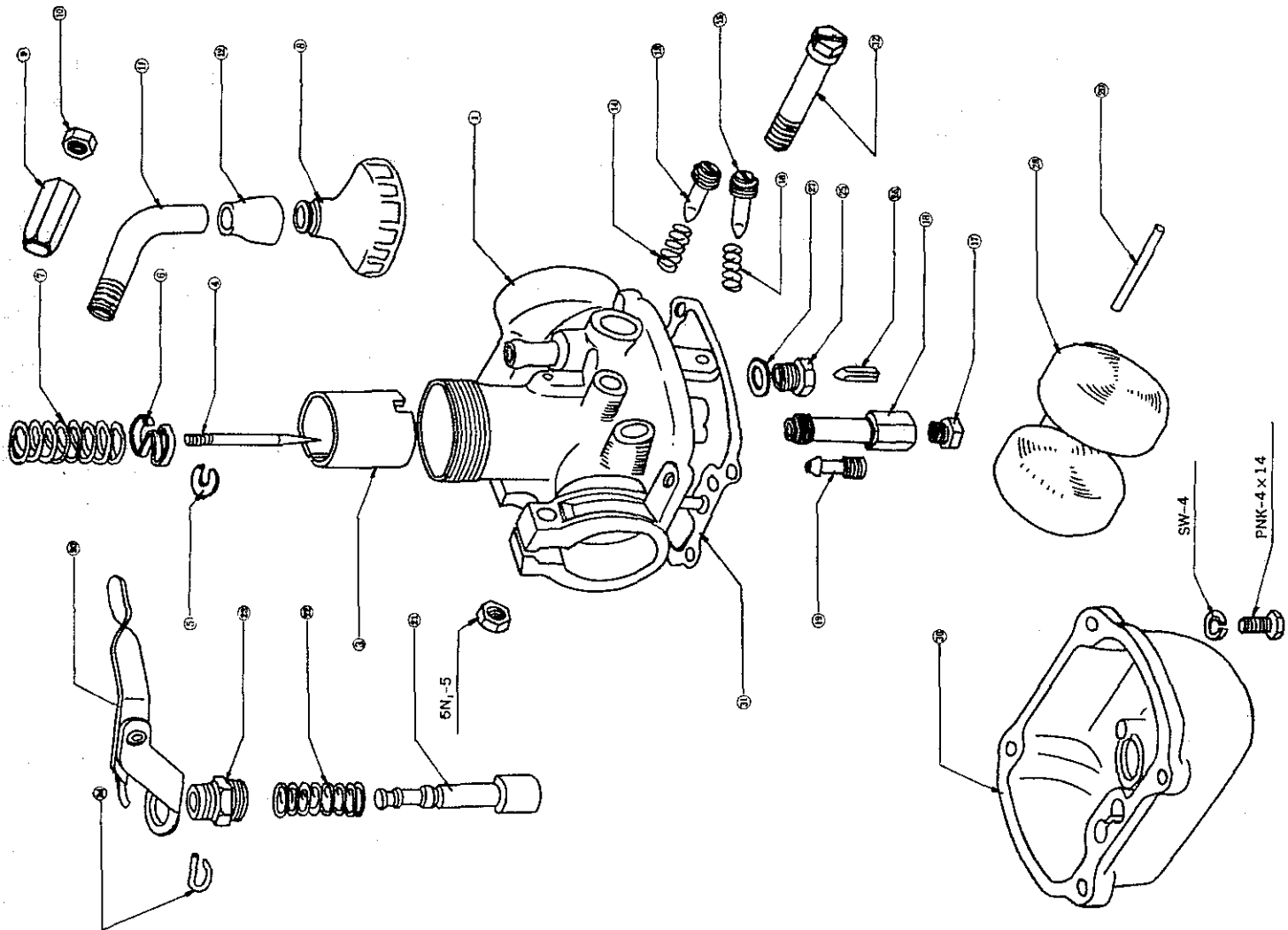
Index No.	Part No.	Part Name	Index No.	Part No.	Part Name
16- 1	1341-3003	Piston S T D	16- 3	1381-3000	Piston Pin
16- 1	1342-3001	Piston 0.25 O/S	16- 4	1382-3000	Piston Pin Circlip
16- 1	1343-3001	Piston 0.50 O/S	16- 5	1301-3100	Crank Shaft Comp
16- 2	1305-3000	Piston Ring S T D Set	16- 6	09067-101	3×15 Woodruff Key
16- 2	1306-3000	Piston Ring 0.25mm O/S Set	16- 7	2357-3100	Clutch Nut
16- 2	1307-3000	Piston Ring 0.50mm O/S Set	16-	0431-1025	Spring Washer



17) CARBURETOR

Bridgestonemotorcycleparts.com

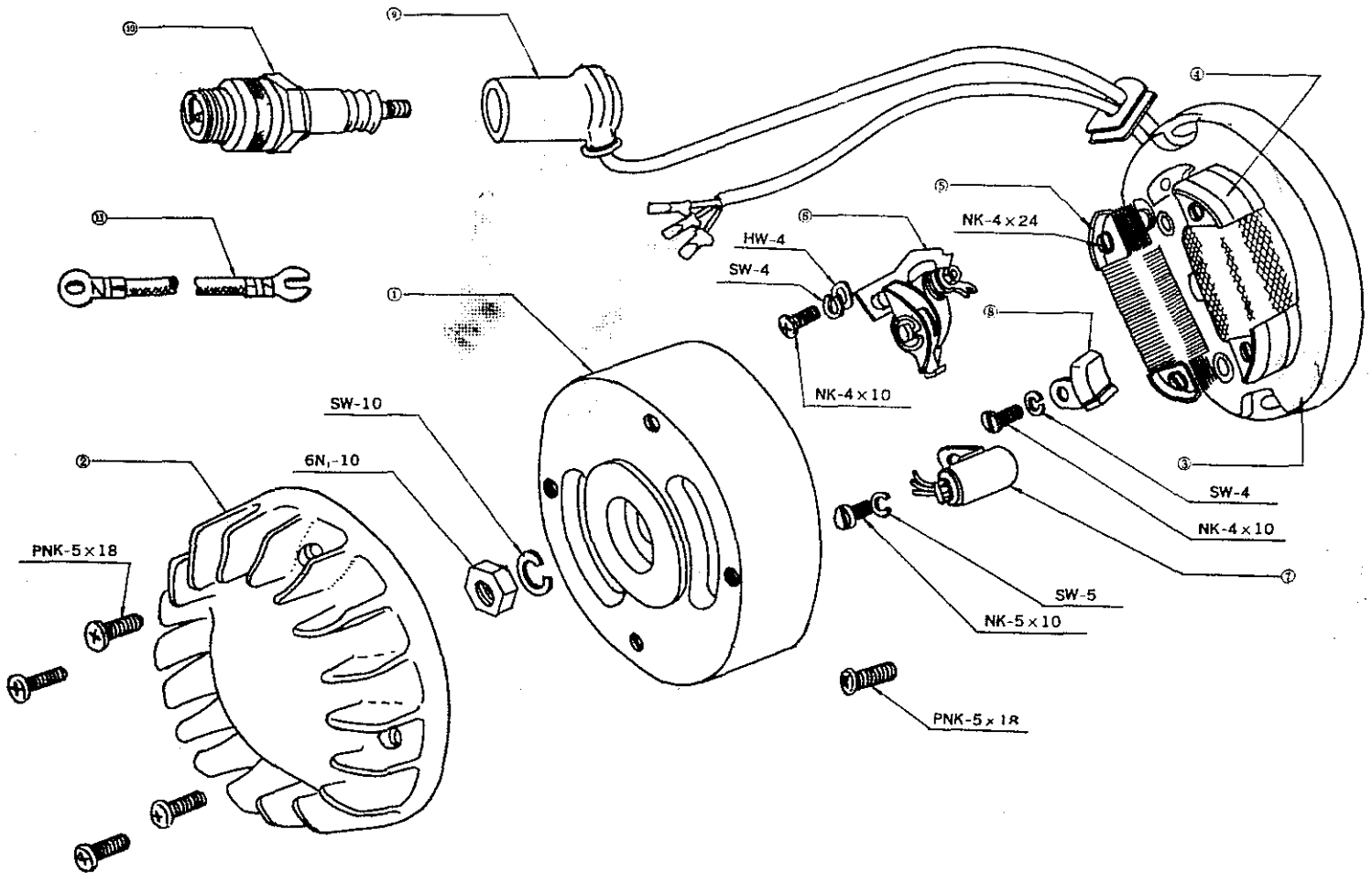
Index No.	Part No.	Part Name	Index No.	Part No.	Part Name
17-	1600-3102	Carburetor Assy	17-18	1633-3100	Needle Jet
17- 1	1611-3102	Mixing Chamber Body	17-19	1634-3101	Pilot Jet
17- 3	1614-3100	Throttle Valve	17-20	1640-3100	Starter Lever Comp
17- 4	1615-3102	Jet Needle	17-21	1645-3010	Starter Plunger
17- 5	1616-3021	Needle Clip	17-22	1646-3010	Plunger Spring
17- 6	1617-3021	Spring Seat	17-23	1647-3010	Plunger Cap
17- 7	1618-3020	Throttle Valve Spring	17-24	1648-3010	Plunger Clip
17- 8	1619-3100	Mixing Chamber Top	17-25	1660-3100	Float Valve Assy
17- 9	1622-3100	Cable Adjuster	17-27	1665-3100	Valve Seat Gasket
17-10	1623-3020	Adjusting Lock Nut	17-28	1666-3100	Float
17-11	1624-3100	Cable Guide	17-29	1667-3100	Float Pin
17-12	1625-3100	Cable Adjuster Cap	17-30	1656-3100	Float Chamber Body
17-13	1627-3021	Throttle Stop Screw	17-31	1657-3100	Float Chamber Gasket
17-14	1628-3010	Stop Screw Spring	17-32	1613-3020	Clamp Screw
17-15	1631-3010	Pilot Air Screw	17-	0311-0414	Cross Recd Pan Haed Screw
17-16	1632-3010	Air Screw Spring	17-	0211-0500	Hexagon Nut A
17-17	1635-3000 80	80 Main Jet	17-	0431-0410	Spring Washer



18) FLYWHEEL MAGNETO · FAN

Bridgestonemotorcycleparts.com

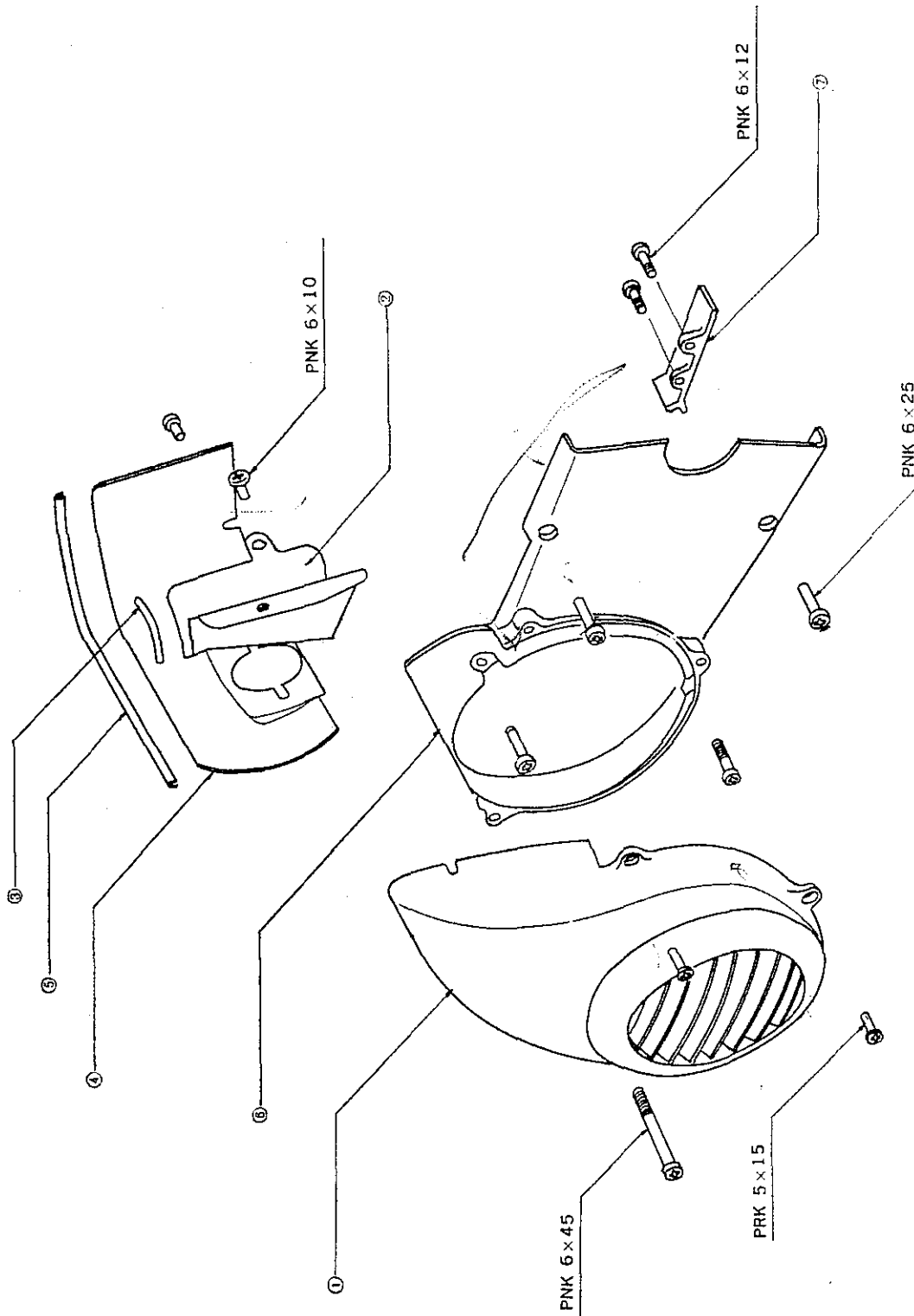
Index No.	Part No.	Part Name	Index No.	Part No.	Part Name
18-	1701-3101	Flywheel Magneto Assy	18-11	1785-3010	Engine Earth Wire
18- 1	1718-3013	Magneto Flywheel	18-	0311-0518	Cross Recd Pan Head Screw
18- 2	1811-3010	Fan	18-	0361-0424	Pan Head Screw
18- 3	1710-3100	Magneto Startor Assy	18-	0361-0510	Pan Head Screw
18- 4	1712-3100	Magneto Ignition Coil	18-	0361-0410	Pan Head Screw
18- 5	1714-3010	Magneto Lighting Coil	18-	0211-1000	Hexagon Nut A
18- 6	1752-5000	Contact Breaker Assy	18-	0431-1025	Spring Washer
18- 7	1753-3010	Condenser	18-	0431-0513	Spring Washer
18- 8	1754-3020	Oil Felt	18-	0431-0410	Spring Washer
18- 9	8521-3000	Spark Plug Cap	18-	0411-0410	Plane Washer A
18-10	1781-3002	Spark Plug			



19) FAN COVER · CYLINDER COVER · CRANK CASE COVER

Bridgestonemotorcycleparts.com

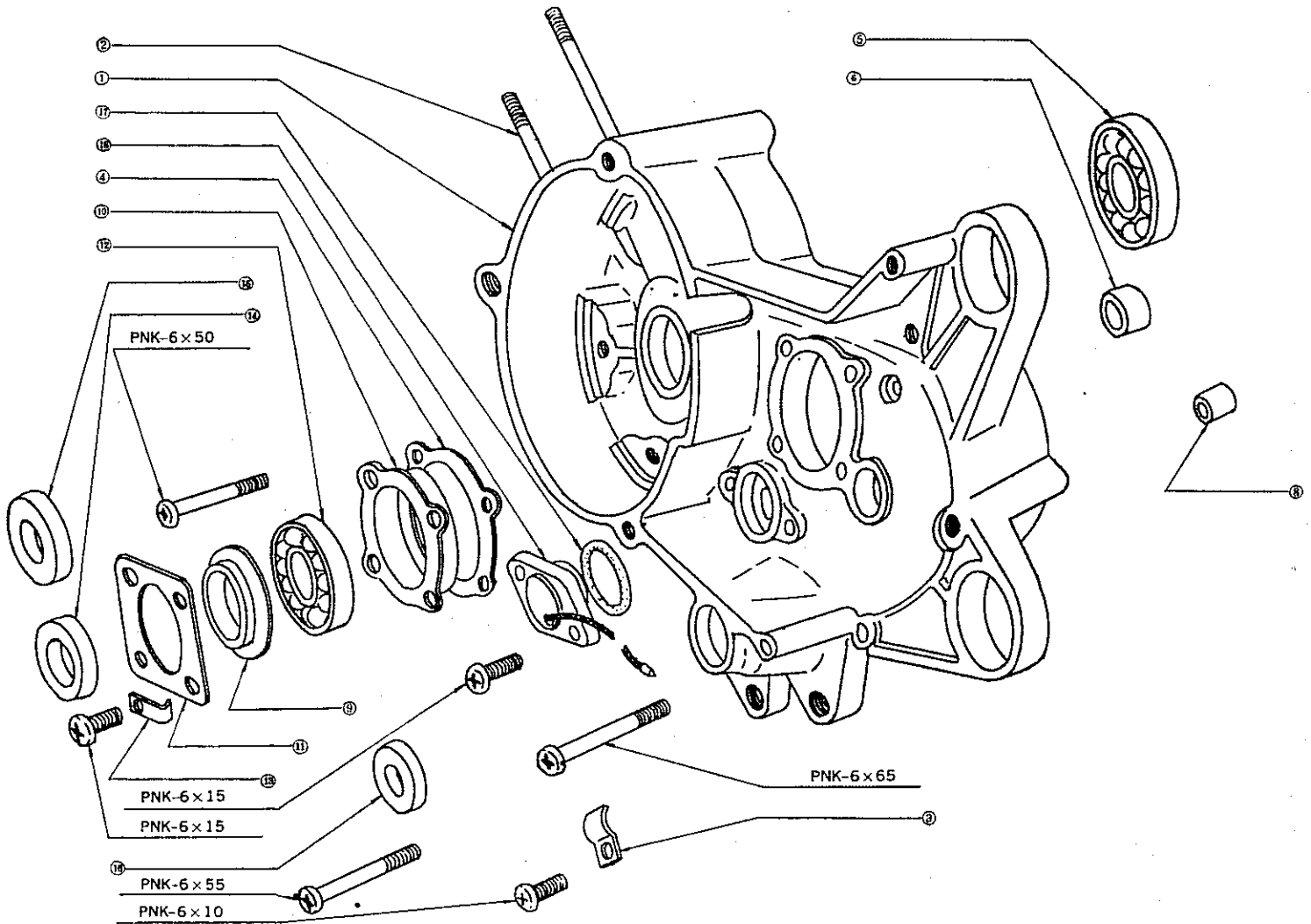
Index No.	Part No.	Part Name	Index No.	Part No.	Part Name
19- 1	1821-3100	Fan Cover			
19- 2	1841-3100	Cylinder Cover B	19-	0313-0645	Cross Recd Pan Head Screw
19- 3	1842-3100	Cylinder Cover Rubber B	19-	0311-0625	Cross Recd Pan Head Screw
19- 4	1831-3100	Cylinder Cover A	19-	0311-0612	Cross Recd Pan Head Screw
19- 5	1832-3100	Cylinder Cover Rubber A	19-	0311-0610	Cross Recd Pan Head Screw
19- 6	2151-3100	Left Crank Case Cover	19-	0311-0516	Cross Recd Pan Head Screw
19- 7	2154-3100	Dust Cover B			



20) LEFT CRANK CASE

Bridgestonemotorcycleparts.com

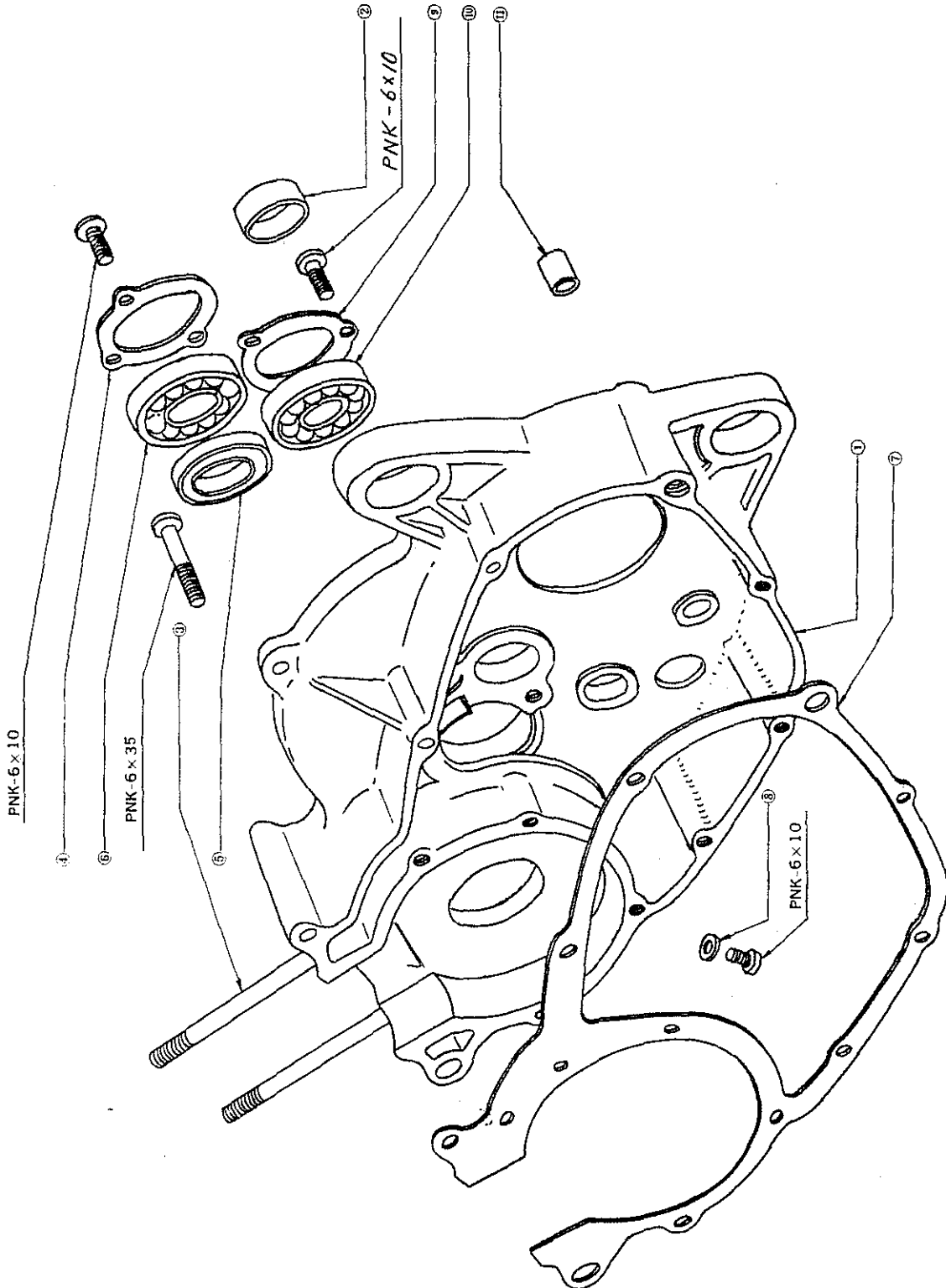
Index No.	Part No.	Part Name	Index No.	Part No.	Part Name
20- 1	2110-3100	Left Crank Case	20-14	09090-105	20 Oil Seal
20- 2	2121-3100	Cylinder Mounting Stud	20-15	09090-104	17 Oil Seal
20- 3	2129-3100	Wire Clamp	20-16	09090-101	12 Oil Seal
20- 4	2187-3100	Bearing Housing Gasket	20-17	09066-101	20 O Ring
20- 5	07-6303-03	Ball bearing	20-18	1760-3002	Neutral Switch Comp
20- 6	2112-3000	Counter Shaft Bush	20-	1762-5000	Neutral Switch Contact Plate
20- 8	09057-101	6×10×10B Dowel	20-	0313-0665	Cross Recd Pan Head Screw
20- 9	2125-3001	Oil Seal Housing	20-	0313-0655	Cross Recd Pan Head Screw
20-10	2119-3001	Drive Shaft Bearing Housing	20-	0311-0650	Cross Recd Pan Head Screw
20-11	2126-3003	Oil Seal Holder	20-	0311-0616	Cross Recd Pan Head Screw
20-12	07-6302-01	Ball Bearing	20-	0311-0610	Cross Recd Pan Head Screw
20-13	2129-3000	Wire Clamp			



21) RIGHT CRANK CASE

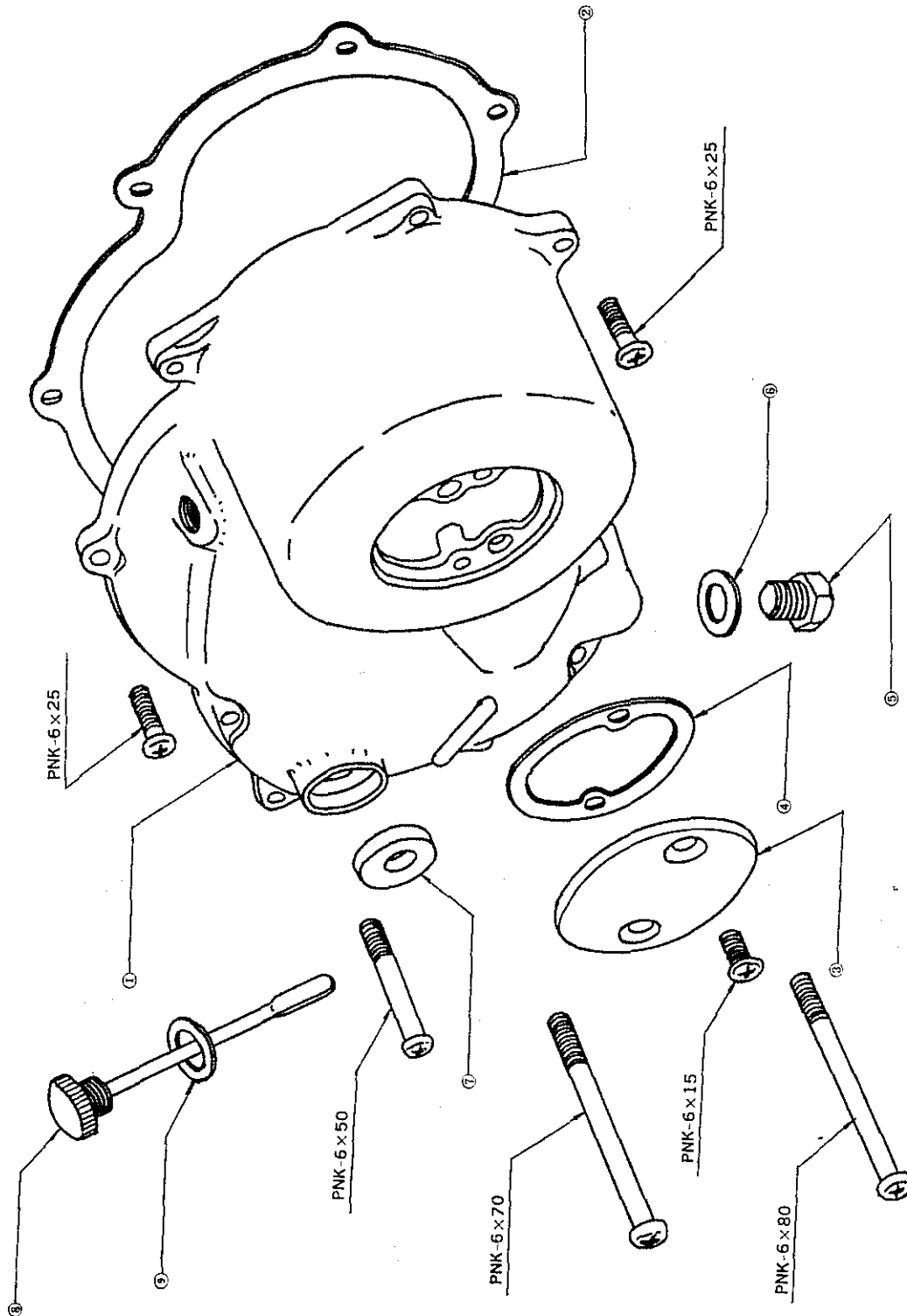
Bridgestonemotorcycleparts.com

Index No.	Part No.	Part Name	Index No.	Part No.	Part Name
21- 1	2130-3100	Right Crank Case Comp	21- 8	09064-102	6 Fiber Gasket
21- 2	2133-3100	Drive Shaft Bush	21- 9	2145-3002	Counter Shaft Bearing Holder
21- 3	2121-3100	Cylinder Mounting Stud	21-10	07-6302-01	Ball Bearing
21- 4	2142-3100	Crank Shaft Bearing Holder	21-11	09057-101	6×10×10B Dowel
21- 5	09099-107	21 Oil Seal			
21- 6	07-6303-03	Ball Bearing	21-	0313-0635	Cross Recd Pan Head Screw
21- 7	2181-3100	Crank Case Gasket	21-	0311-0610	Cross Recd Pan Head Screw



22) CRANK CASE COVER Bridgestonemotorcycleparts.com

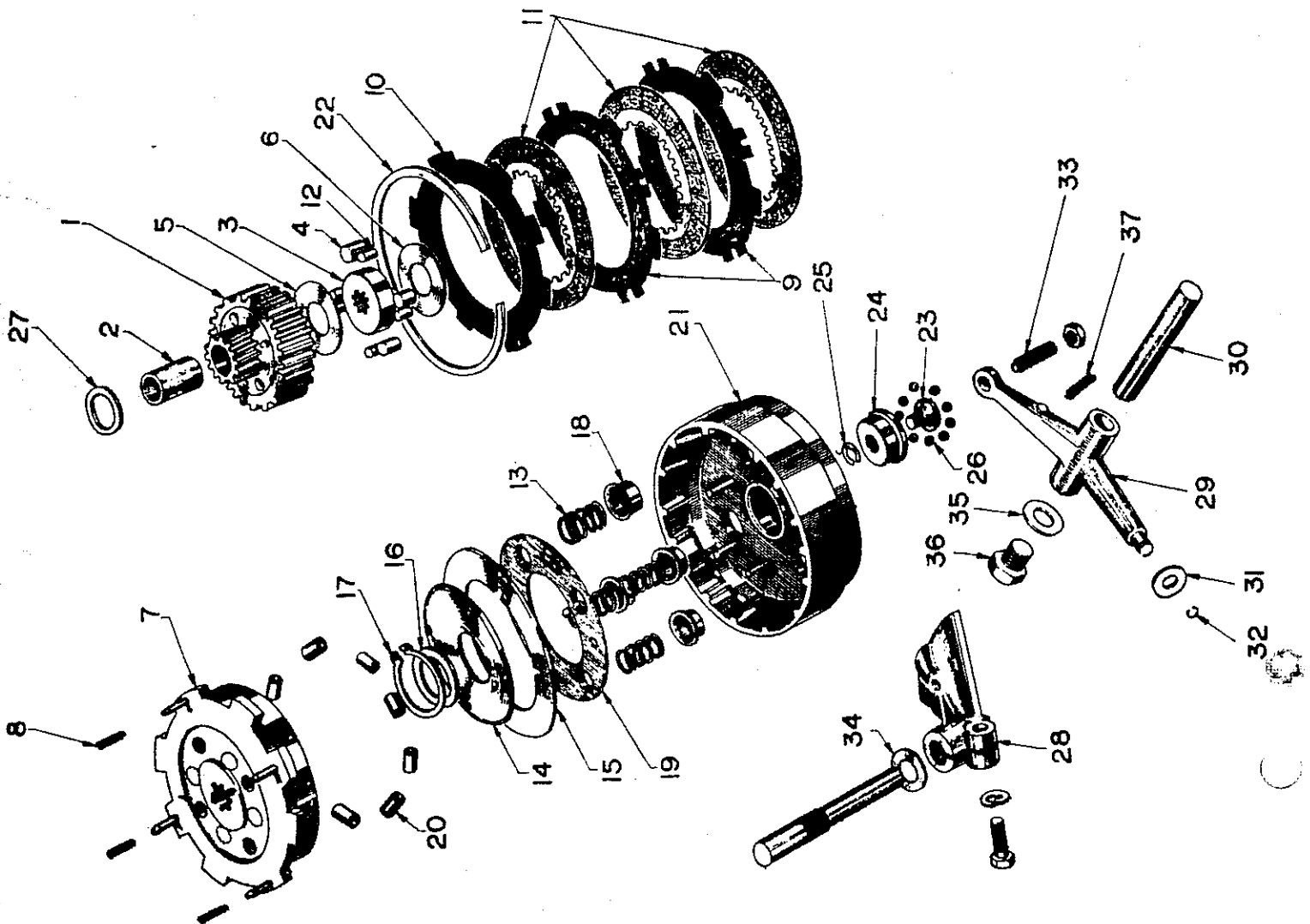
Index No.	Part No.	Part Name	Index No.	Part No.	Part Name
22- 1	2160-3100	Crank Case Cover Comp	22- 9	2188-3000	Oil Filler Gasket
22- 2	2183-3100	Crank Case Cover Gasket	22-	0311-0678	Cross Recd Pan Head Screw
22- 3	2385-3100	Release Cover	22-	0311-0670	Cross Recd Pan Head Screw
22- 4	2386-3100	Release Cover Gasket	22-	0311-0650	Cross Recd Pan Head Screw
22- 5	09058-101	14 Drain Plug	22-	0311-0625	Cross Recd Pan Head Screw
22- 6	09064-101	14 Fiber Gasket	22-	0311-0516	Cross Recd Pan Head Screw
22- 7	09090-103	15 Oil Seal			
22- 8	2164-3001	Oil Gauge Comp			



23) CLUTCH

Bridgestonemotorcycleparts.com

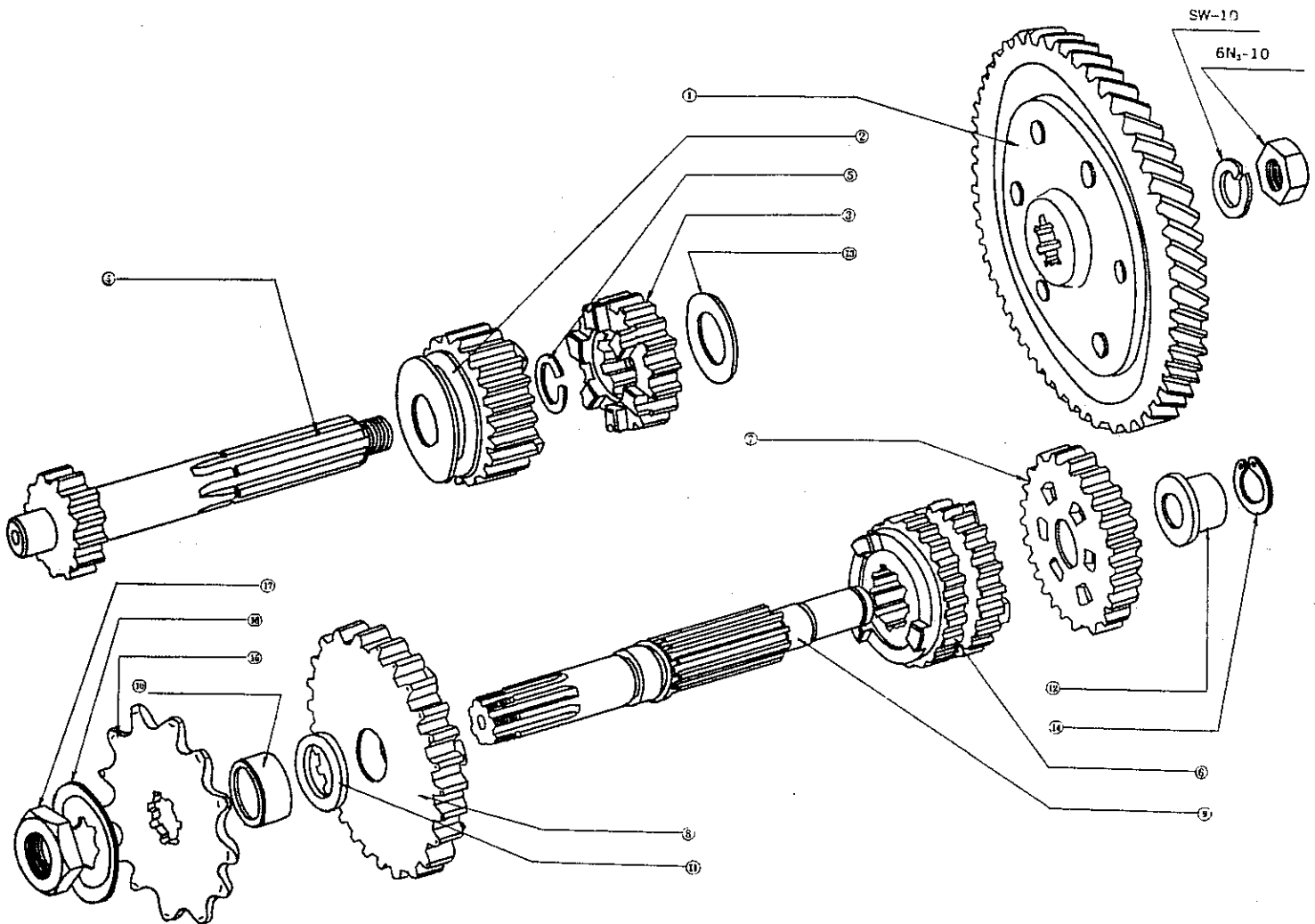
Index No.	Part No.	Part Name	Index No.	Part No.	Part Name
23-	2300-3101	Clutch Assy	23-21	2340-3101	Clutch Housing Comp
23- 1	2310-3100	Clutch Hub Comp	23-22	2345-3100	Clutch Set Ring
23- 2	2315-3100	Drive Pinion Bush	23-23	2351-3100	Push Rod
23- 3	2317-3100	Freewheel Boss	23-24	2352-3100	Ball Race
23- 4	09062-101	8×8 Roller	23-25	2353-3100	Push Rod Clip
23- 5	2318-3100	Free Wheel Washer	23-26	0611-0532	Ball
23- 6	2319-3100	0.5 Free Wheel Washer	23-27	2356-3100	Drive Pinion Spacer
23- 7	2320-3100	Clutch Boss Comp	23-28	2371-3102	Release Cam
23- 8	2325-3101	Clutch Return Spring	23-29	2373-3100	Release Arm
23- 9	2326-3100	Inner Plate	23-30	2374-3100	Release Arm Shaft
23-10	2327-3100	Outer Plate	23-31	2375-3100	Release Arm Roller
23-11	2328-3100	Friction Plate	23-32	2376-3100	Release Arm Clip
23-12	09062-102	5×8 Roller	23-33	2378-3100	Release Arm Adjusting Screw
23-13	2331-3101	Clutch Spring	23-34	09049-104	10×0.2 Shim
23-14	2332-3100	Push Plate Spring	23-35	09065-101	12 Aluminum Gasket
23-15	2333-3100	1.6 Thrust Washer	23-36	09011-101	12×10 Hexagon Bolt
23-16	09049-103	28×0.2 Shim	23-37	2379-3100	Release Arm Spring
23-17	09002-102	28 B Snap Ring	23-	0221-0600	Hexagon Nut B
23-18	2335-3100	Clutch Spring Holder	23-	0111-0822	Hexagon Bolt
23-19	2336-3100	Guide Plate Spring			
23-20	2338-3100	Free Weight Collar			



24) TRANSMISSION GEARS

Bridgestonemotorcycleparts.com

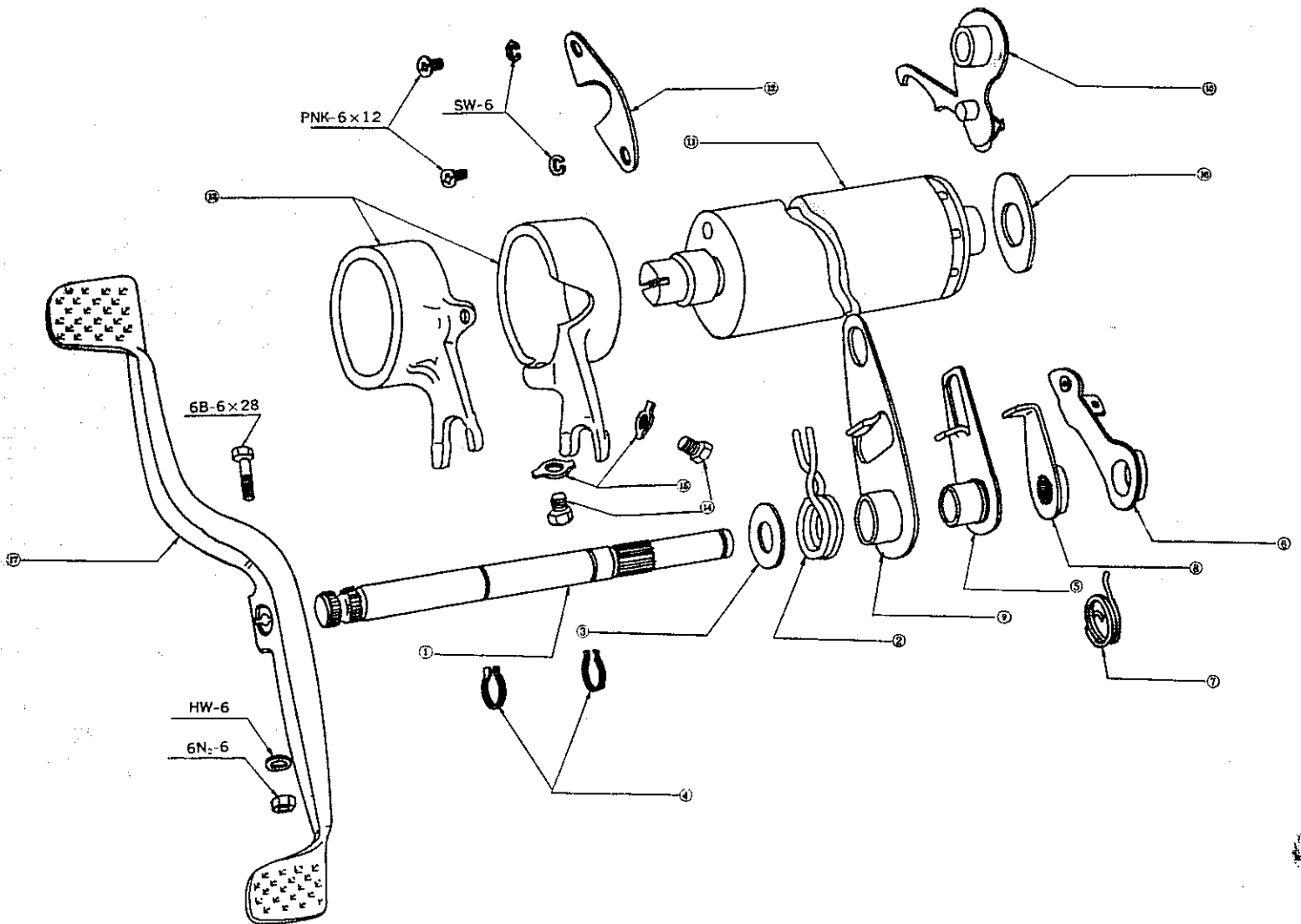
Index No.	Part No.	Part Name	Index No.	Part No.	Part Name
24- 1	2410-3100	Driven Gear Comp	24-11	2481-3100	Drive Shaft Spacer
24- 2	2431-3004	3rd Gear A	24-12	2486-3100	Drive Shaft Push Ring
24- 3	2426-3100	2nd Gear A	24-13	09041-109	15 Plane Washer
24- 4	2421-3100	Counter Shaft	24-14	09006-103	11F Snap Ring
24- 5	09006-102	15 F Snap Sing	24-15	2484-3010	Drive Sprocket
24- 6	2461-3004	3rd Gear B	24-16	09047-101	14 Lock Washer
24- 7	2456-3002	2nd Gear B	24-17	09021-101	14 Hexagon Nut
24- 8	2451-3100	1st Gear B			
24- 9	2446-3100	Drive Shaft	24-	0231-1000	Hexagon Nut C
24-10	2483-3003	Drive Sprocket Rspacer	24-	0431-1025	Spring Washer



25) GEAR SHIFTING PARTS

Bridgestonemotorcycleparts.com

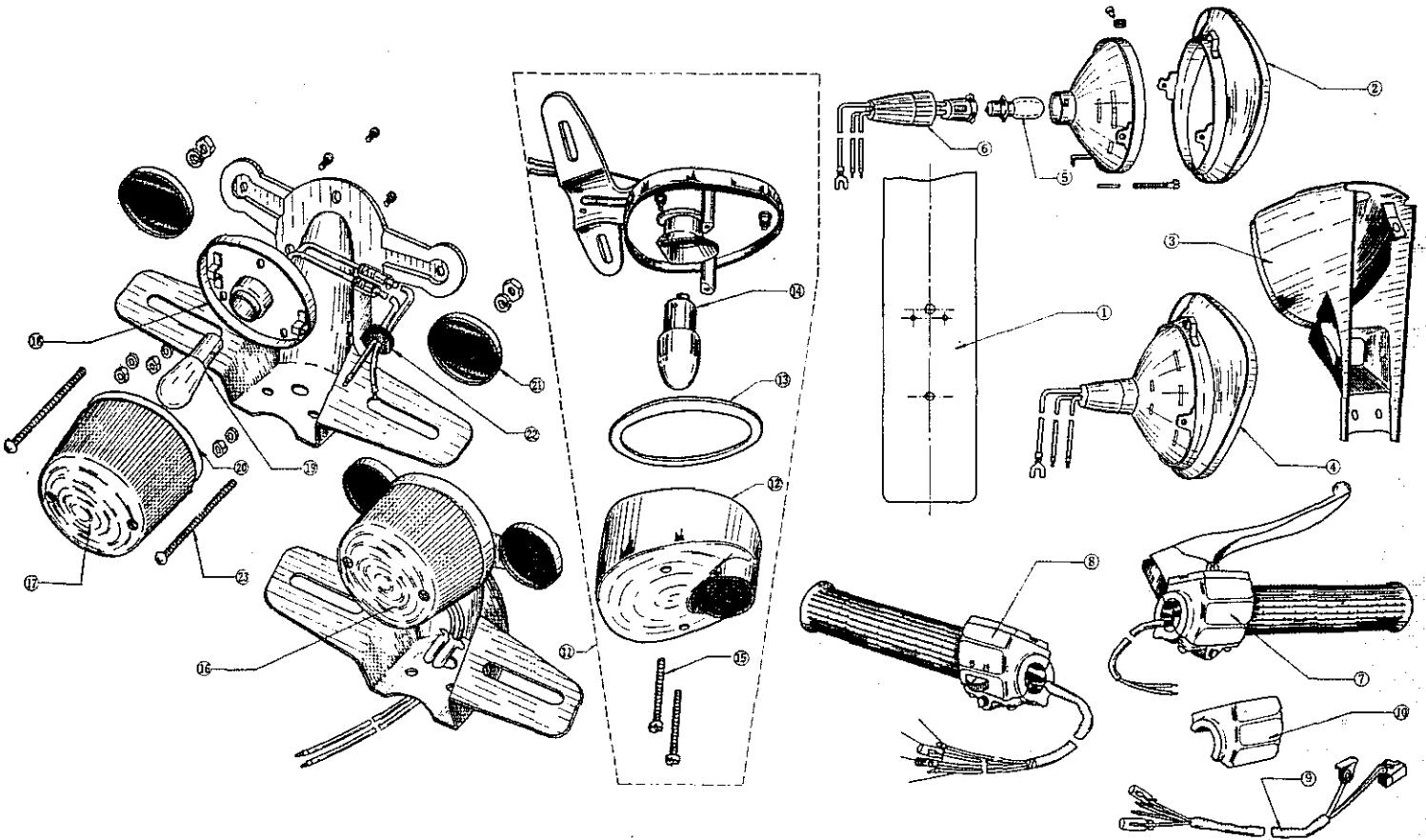
Index No.	Part No.	Part Name	Index No.	Part No.	Part Name
25- 1	2511-3100	Change Shaft	25-11	2520-3100	Shift Drum Comp
25- 2	2551-3002	Change Shaft Return Spring	25-12	2549-3100	Durm Guide Plate
25- 3	2552-3002	Change Shaft Spring Seat	25-13	2541-3003	Shift Fork
25- 4	09002-101	12B Snap Ring	25-14	2544-3001	Fork Guide
25- 5	2554-3110	Shift Plate	25-15	09047-102	6 Lock Washer
25- 5	2554-3100	Shift Plate	25-16	09049-105	15×0.2 Shim
25- 6	2530-3100	Drum Stopper Comp	25-17	2581-3012	Gear Change Pedal
25- 7	2538-3001	Drum Stopper Spring	25-	0311-0612	Cross Recd Pan Head Screw
25- 8	2556-3110	Shift Arm	25-	0113-0628	Hexagon Bolt A
25- 8	2556-3100	Shift Arm	25-	0221-0600	Hexagon Nut B
25- 9	2555-3101	Shift Stopper Plate	25-	0431-0615	Spring Washer
25-10	2510-3100	Change Arm Comp	25-	0411-0613	Plane Washer A



26) KICK STARTER PARTS

Bridgestonemotorcycleparts.com

Index No.	Part No.	Part Name	Index No.	Part No.	Part Name
26- 1	2620-3100	Kick Starter Shaft Comp			
26- 2	2631-3001	Kick Starter Gear C	26-	2680-3100	Kick Starter Arm Assy
26- 3	2632-3004	Kick Starter Ratchet Arm	26-12	2681-3100	Kick Starter Arm
26- 4	2633-3001	Kick Starter Ratchet	26-13	2690-3010	Kick Starter Pedal
26- 5	2634-3000	Kick Starter Ratchet Spring	26-14	2683-3011	Kick Starter Pedal Rubber
26- 6	2635-3000	Kick Starter Ratchet Stopper	26-15	2684-3010	Kick Starter Pedal Spring
26- 7	09041-105	14 Plane Washer	26-16	09041-107	10 Plane Washer
26- 8	09006-104	15 Snap Ring	26-	0551-3018	Split Pin
26- 9	2636-3000	Kick Starter Return Spring			
26-10	2637-3001	Return Spring Hook	26-	0113-0625	Hexagon Bolt A
26-11	09041-109	15 Plane Washer	26-	0431-0615	Spring Washer



27) EXCLUSIVE PARTS FOR U.S.A.(C.H.P)
 Bridgestonemotorcycleparts.com

Index No.	Part No.	Part Name	Index No.	Part No.	Part Name
27- 1	3260-3130 CHG	Rear Fender Comp	27-11	8205-3011	Tail Lamp Assy
27- 1	3260-3130 CFG	Rear Fender Comp	27-12	8251-8000	Tail Lamp Lens
27- 2	8141-3010	Head Lamp Rim	27-13	8253-8000	Tail Lamp Gasket
27- 3	8111-3120 CHG	Head Lamp Body	27-14	8252-3031	Tail Lamp Bulb
27- 3	8111-3120 CFG	Head Lamp Body	27-15	0372-0330	Round Head Screw
27- 4	8102-3020	Head Lamp Assy			Old type C.H.P. tail lamp
27- 5	8171-3020	Head Lamp Bulb	27-16	8202-3030	Tail Lamp Assy
27- 6	8160-3010	Socket Assy	27-17	8251-3020	Tail Lamp Lens
27- 7	6104-5020	Throttle Grip Assy	27-18	8240-3030	Tail Lamp Base Comp
27- 8	6102-3130	Left Grip Assy	27-19	8252-3030	Tail Lamp Bulb
27- 9	6115-3110	Wire Assy	27-20	8253-3020	Tail Lamp Gasket
27-10	6151-5020	Right Switch Case Cover	27-21	8203-3010	Reflector Assy
			27-22	8256-3010	Grommet
			27-23	09534-102	3×55 Oval Head Screw

